



# Windows 7 SWITCH USER

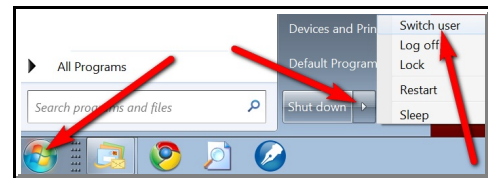
© Darry D Eggleston<sup>1</sup>



Separate Users are necessary when more than one person is using the same computer.

To switch between Users (**Figure 1**):

- 1 Left-click on Start button.
- 2 Left-click on the arrow to the right of “Shut down.”
- 3 Left-click on “Switch user” option.



**Figure 1**

## NOTES —

- 1 If you're playing music using Windows Live Media Player on User 1 and you switch to User 2, that music will continue to play while you're on as User 2. You will not have control over the Player.
- 2 If you use “Switch user,” both users take part of your random access memory (RAM). So if you're not going to be using User 2 for a while, you'll save RAM by using the “Log off” option when you switch back to User 1.
- 3 Have a different background (aka wallpaper) for each user. That will make it easier to tell which User is using the computer.

---

<sup>1</sup> **Permission for reproduction** in whole or in part is granted to groups and organizations for internal, non-profit use provided credit is given to the author along with the copyright notice: Article reprinted with permission. Copyright © 2011 Darry D Eggleston, <http://DarryD.com>.