



# Windows 7 MIGRATE XP WITH EASY TRANSFER AND A USB DRIVE

© Darry D Eggleston<sup>1</sup>



If you're running XP and need a good way to transfer files and settings, here's how to do it.

1. Start with the new Windows 7 machine and select Start ► Getting Started ► 'Transfer your files' (Figure 1).

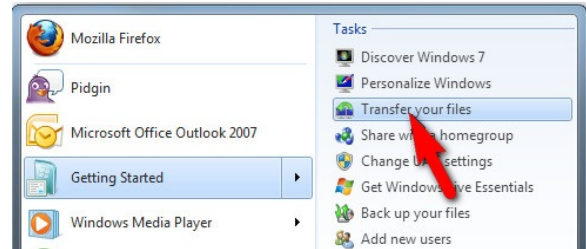


Figure 1

2. Click through the Welcome screen and select "An external hard disk or USB flash drive" (Figure 2).



Figure 2

3. Next choose "this is my new computer" (Figure 3)

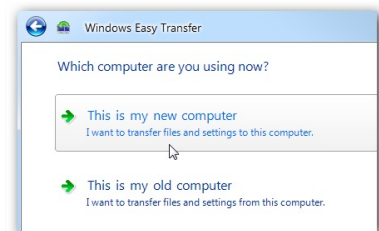


Figure 3

4. Click "No" in the next screen (Figure 4).

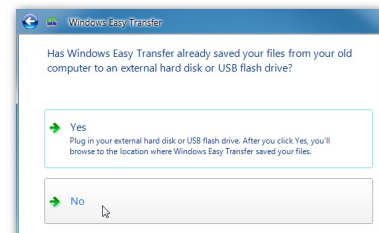
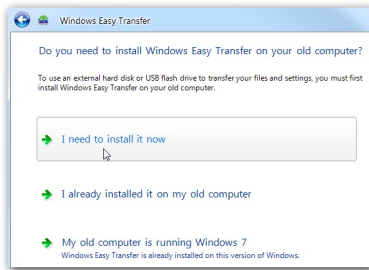


Figure 4

<sup>1</sup> **Permission for reproduction** in whole or in part is granted to groups and organizations for internal, non-profit use provided credit is given to the author along with the copyright notice: Article reprinted with permission. Copyright © 2011 Darry D Eggleston, <http://DarryD.com>.



**Figure 5**

5. CAUTION: *External drive must be plugged in before doing this step.* Select “I need to install it now” to install Windows Easy Share now so you get the latest updated version (**Figure 5**).

6. Choose “External hard disk or shared network folder” to copy the Easy Transfer program to the external drive (**Figure 6**).



**Figure 6**



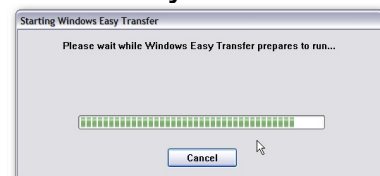
**Figure 7**

7. After the Easy Transfer file is copied, you will be prompted to move to the old PC (**Figure 7**).

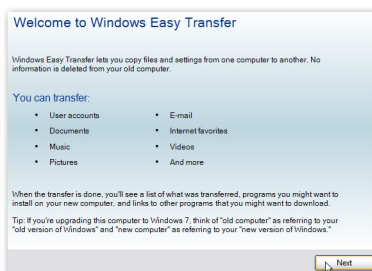
## CONFIGURE XP TRANSFER PROCESS

8. Plug the external hard drive into the XP PC and launch Easy Transfer.

9. The transfer progress shows (**Figure 8**).



**Figure 8**



**Figure 9**

10. A “Welcome to Windows Easy Transfer” appears (**Figure 9**).

11. Choose “An external hard disk or USB flash drive” (Figure 10).

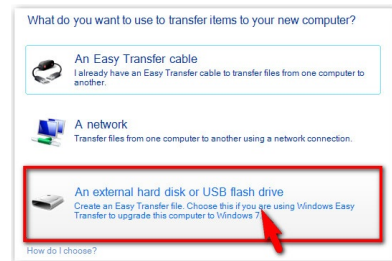


Figure 10



Figure 11

12. After scanning the user accounts and their settings you’re presented with a general list where you can select what to save (Figure 11).

13. Pass on the option to password protect the backup (Figure 12).

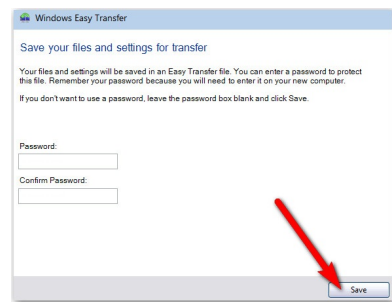


Figure 12

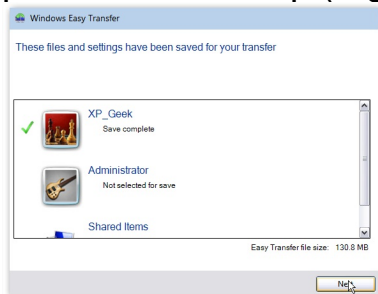


Figure 13

14. A successful save is completed (Figure 13).

15. Plug the external hard drive into the Windows 7 PC.



Figure 15

16. Click “Yes” to this question in the popup window (Figure 14).

17. Explorer opens & navigates to the location of the backup on the external drive (Figure 15).

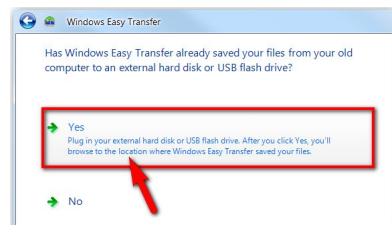


Figure 14

18. Restore the entire backup or specific files/folders, save selection and begin transfer (Figure 16).



Figure 17

19. Transfer window shows (Figure 17).

20. See what was transferred (Figure 18).

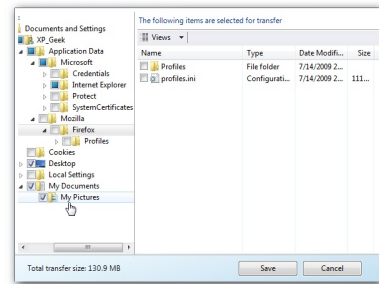


Figure 16

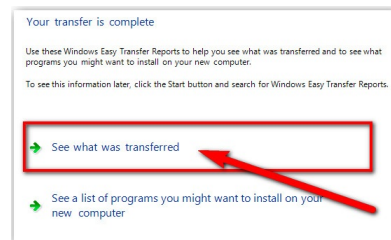


Figure 18

21. Exit the resulting window.