



Windows 7 GRAPHIC EMAILED FROM WINDOWS EXPLORER

© Darry D Eggleston¹



Although most people send graphics using Windows Live Mail, the better way — because you get better choices — is to send graphics from Windows Explorer. Here's how.

1. Select Start ► Pictures and browse to the graphic. RIGHT-click on the graphic and then click on Send to ► Mail recipient (**Figure 1**).

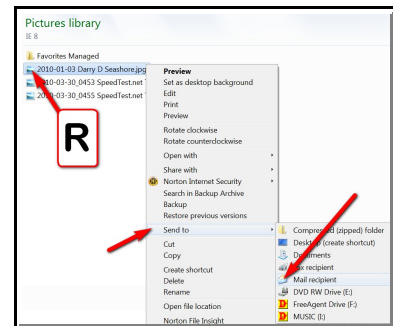


Figure 1

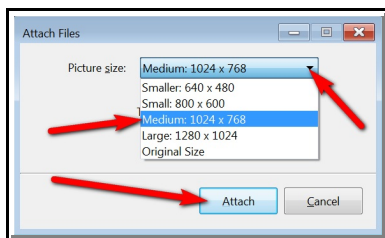


Figure 2

2. Select the size you wish to send (**Figure 2**).

3. If you get the “Photo E-Mail” warning, select your choice (**Figure 3**).

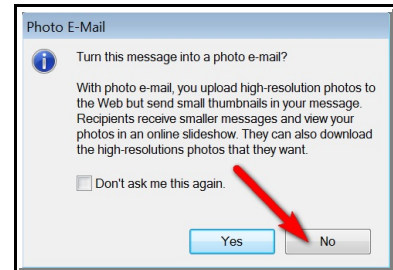


Figure 3

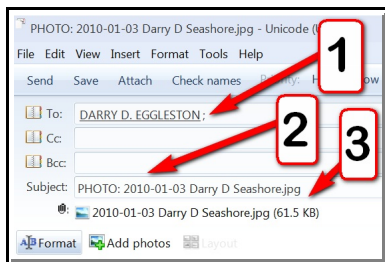


Figure 4

4. Windows Live Mail opens (**Figure 4**):

- ❶ Select addressee.
- ❷ Subject lists the graphic file's name.
- ❸ It shows as an attachment.

¹ Permission for reproduction in whole or in part is granted to groups and organizations for internal, non-profit use provided credit is given to the author along with the copyright notice: Article reprinted with permission. Copyright © 2011 Darry D Eggleston, <http://DarryD.com>.