



Windows 7 DISABLE AERO TO IMPROVE SPEED



© Darryl D Eggleston¹

¿While using Windows 7, my game frequently crashes or freezes. How do I fix this?

The Aero design is the default appearance setting for Windows 7. To improve the memory performance of your video card so that your game can function properly, you can easily disable Aero and use an alternate appearance.

1. RIGHT-click on your Windows 7 desktop.

2. Left-click on Personalize (**Figure 1**).

3. In the resulting window (**Figure 2**):

① Scroll down.

② Select either Basic, Classic or one of the High Contrast themes. Using one of the basic settings frees video card memory for games.

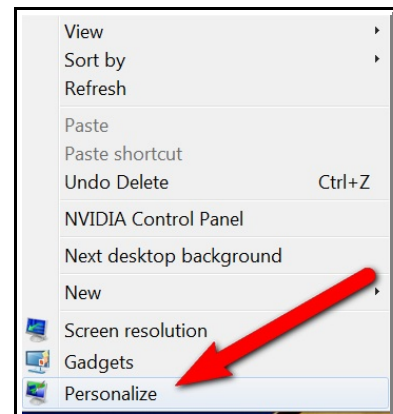


Figure 1

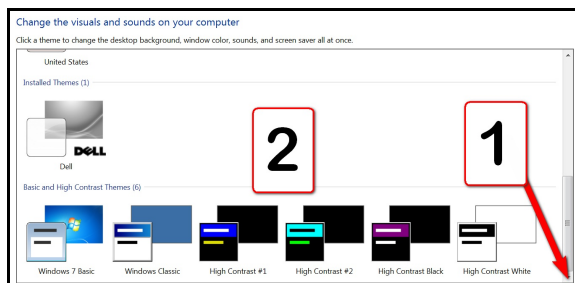
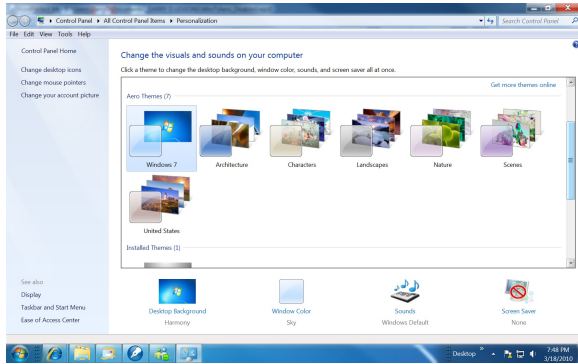


Figure 2

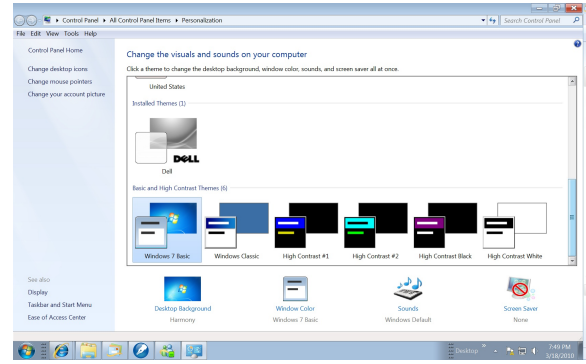
¹ Permission for reproduction in whole or in part is granted to groups and organizations for internal, non-profit use provided credit is given to the author along with the copyright notice: Article reprinted with permission. Copyright © 2011 Darryl D Eggleston, <http://DarrylD.com>.

4. After making your selection, Exit the window.

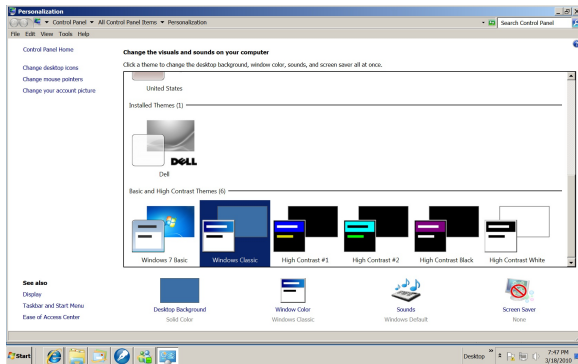
EXAMPLES OF THEMES



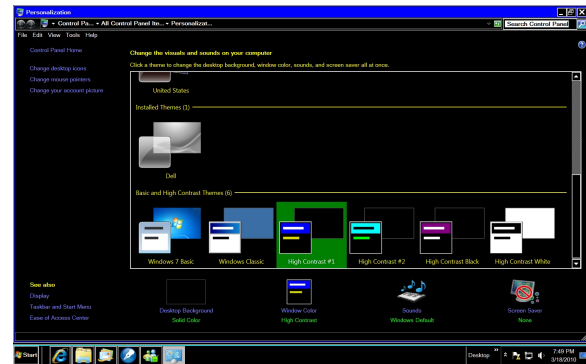
Windows 7 Theme



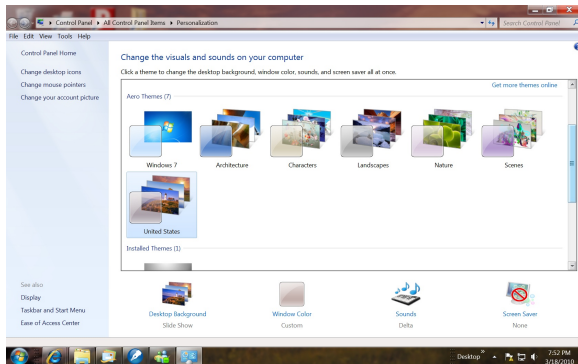
Windows 7 Basic



Windows Classic



High Contrast #1



United States Theme

I chose the simple "Dell" gray background in the Windows Classic mode.