

# PUBLISH TO PDF

© Darry D Eggleston, 813.677.2871, [DarryD@darryd.com](mailto:DarryD@darryd.com)

Click on any blue, underlined text to go to its linked reference.



In addition to being able to open and save files in many widely used formats, you can publish to *portable document format* (PDF) files.

PDF is used when you need to share files with those who do not have your word processor, like WordPerfect.

These steps are for WordPerfect X3. If you're using an older version, you may have to refer to Figure 6.

## TO PUBLISH TO PDF:

1. With the document open, from the MenuBar, select File ► Publish to PDF (Figure 1).

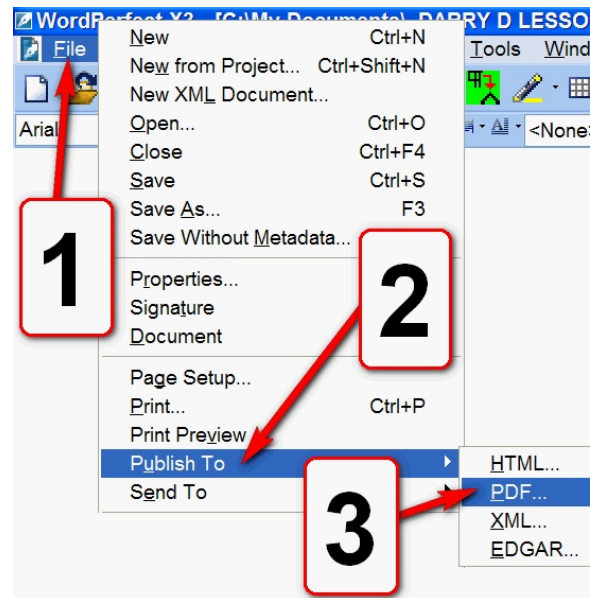


Figure 1

---

<sup>1</sup> Editors: Dick Evans & Parker Monroe. Permission for reproduction in whole or in part is granted to organizations for internal, non-profit use provided credit is given to the author along with the copyright notice: Article reprinted with permission. Copyright © 2007 Darry D Eggleston, <http://DarryD.com>.

2. Under the General tab (**Figure 2**):

- ❶ Click to turn on  next to “Full document.”
- ❷ Make the compatibility to 5.0.
- ❸ Make the “PDF style” custom.

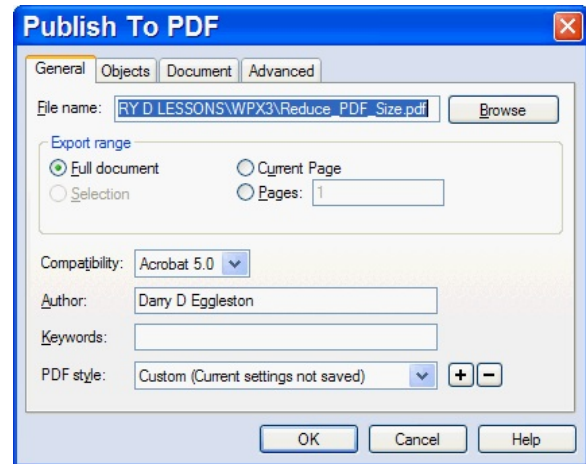


Figure 2

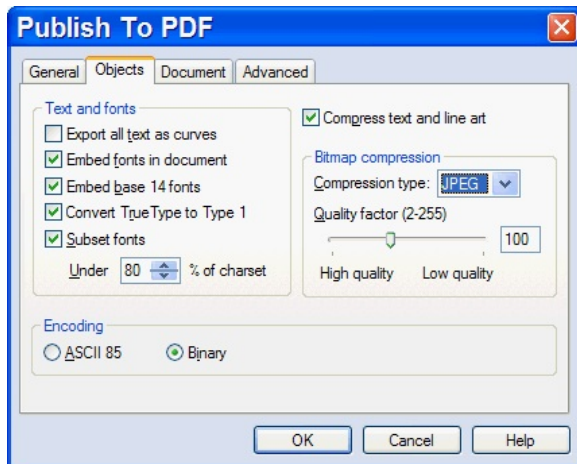


Figure 3

3. Under the “Objects” tab:

- ❶ Click to turn on  next to all the boxes, on the left, except the first one.
- ❷ Click to turn on  next to “Binary.”
- ❸ Click to turn on  next to “Compress text and line art.”
- ❹ Select JPG as “Compression type.” Use “100” for “Quality Factor.”

4. Under the “Document” tab (**Figure 4**):

- ❶ Click to turn on  next to “Include hyperlinks.”
- ❷ Click to turn on  next to “Generate bookmarks.”
- ❸ Click to turn on  next to “Page Only.”

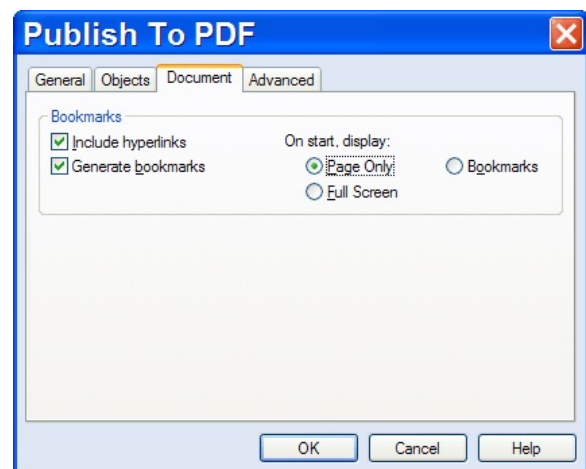


Figure 4

5. Under the “Advanced” tab (Figure 5):

❶ Select RGB as the “Output...” format.

**NOTE:** You can make the file smaller still by selecting “Grayscale” but it will remove all color from the document.

❷ Click on “Optimize for Web.”

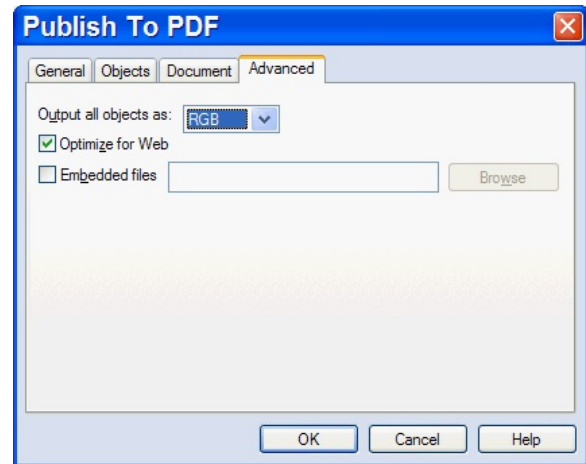


Figure 5

## OTHER VERSIONS OF WORDPERFECT

In older versions of WordPerfect, the method is:

❶ From the MenuBar, select File ➤ Publish to PDF.

❷ Click to turn on ✓ next to “Full Document.”

❸ In the “Publish to PDF” window, ➤ Change “Compress bitmaps” to be JPG

✓ Compress text streams

✓ Include fonts in the document

✓ Convert TrueType to Type 1

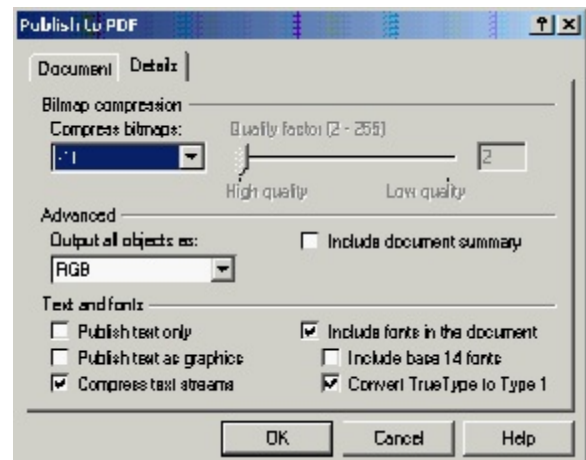


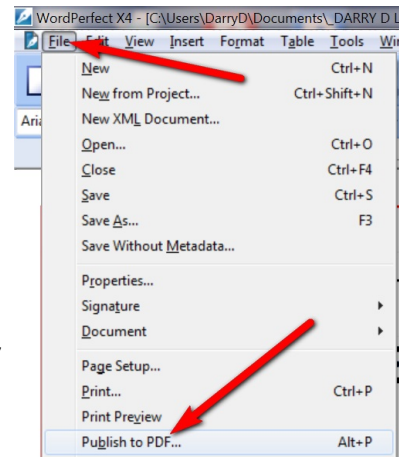
Figure 6

## WORDPERFECT X4

With WordPerfect X4 (14), the File menu options have changed (**Figure 7**).

### MAJOR PROBLEM

There is a major problem with publishing to PDF if a Windows 7 computer has the Intel Quad processor in it and runs WordPerfect X3 or X4. Corel is either unaware — although that's all but impossible to believe — or uninterested in fixing the problem. The problem is widely discussed on the “Dual-core & Quad-Core Support” at [OfficeCommunity.com](http://OfficeCommunity.com) or <http://tinyurl.com/yjvmz35>



**Figure 7**

After much research, here's what creates the problem on my computers:

- ❶ I can insert any number of JPG until I File ► Publish to PDF.
- ❷ After that, I can insert one more JPG (sometimes).
- ❸ The second JPG insertion gets the error message: “CdrConv.exe — Application Error: The instruction at 0x036cd6e7 referenced memory at 0x00000007. The memory could not be read. Click on OK to terminate the program.”
- ❹ When I click “OK,” I get a second message: “WordPerfect: Detected file format is not supported.”

### WORK AROUND

★ Having two User accounts: One User account used to create WP documents and insert graphics into them, and a 2<sup>nd</sup> User account used to create PDF files.

♪ While Corel recommends uninstalling and reinstalling WordPerfect X4. I've installed, uninstalled, reinstalled, etc. multiple times — all without success. You can uninstall & reinstall to your heart's content. The moment that PDF is created, insertion of JPG is not possible (after the first one).