

# ALBUM CREATOR MACRO

© Darry D Eggleston, 813.677.2871, [DarryD@darryd.com](mailto:DarryD@darryd.com)

Click on the blue, underlined text to go to its linked reference.



How would you like to be able to make a WordPerfect document showing all the graphics you have in a given folder? This is the macro, by Barry MacDonnell, that will do that. Shared with me by Dave Lee, it has done wonders for allowing me to get a better viewing of the graphics that I have in my clipart collection.

It will convert graphics in these formats and place them into a document: Joint Photographic Experts Group (JPEG/JPG), Windows Bitmap (BMP), CompuServe Bitmap (GIF), Tagged Image File (TIF), and WordPerfect Graphic (WPG). Here's how to use it:

1. Open a new, blank document.
2. From the MenuBar, select Tools > Macro > Play.
3. Double, left-click on "Album.wcm" macro.

4. An options window opens (Figure 1):

- 1 Select the folder that holds the graphics.
- 2 Select the graphics type.
- 3 Select 2, 4 or maximum graphics-per-page.
- Select descending order or keep the default ascending order.
- Add headers or footers to the document. You can use up to 500 characters each.

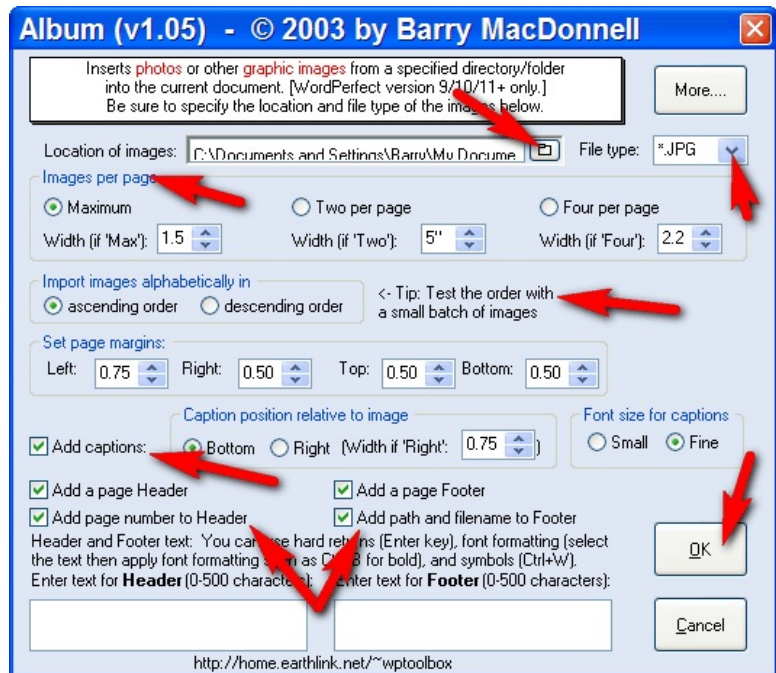


Figure 1

<sup>1</sup> Permission for reproduction in whole or in part is granted to groups and organizations for internal, non-profit use provided credit is given to the author along with the copyright notice: Article reprinted with permission. Copyright © 2010 Darry D Eggleston, <http://DarryD.com>. Editors: PegEgg Eggleston & Parker Monroe.

- ▶ Left-click on “OK” button when finished.