

Windows Live Messenger

ADD A CONTACT

© Darry D Eggleston, 813.677.2871, DarryD@darryd.com

Click on any blue, underlined text to go to its linked reference.



The advantages of Windows Live Messenger are nullified if you never add new contacts (people with whom you want to communicate). Here's how.

1. After you open the program (**Figure 1**):

- 1 Left-click on the avatar (icon-like figure) with the green plus sign.
- 2 Left-click on 'Add a contact...'



Figure 1

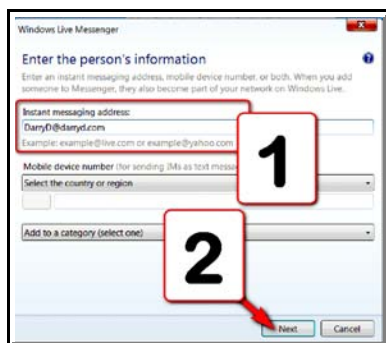


Figure 2

2. 'Enter the person's information' (**Figure 2**):

- 1 Add the email address of the person.
- 2 Left-click on 'Next' button.

3. The program confirms that you've entered the information (**Figure 3**), so Left-click on the 'Close' button.



Figure 3

That's all there is to it.

Now you can continue to add as many contacts as you can handle.

¹ Editors: Peggy S. Eggleston and Parker Monroe. Permission for reproduction in whole or in part is granted to individuals and to organizations for internal, non-profit use provided credit is given to the author along with the copyright notice: Article reprinted with permission. Copyright © 2007-9 Darry D Eggleston, <http://DarryD.com>.