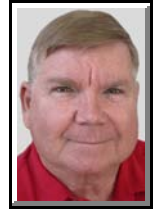


Vista

WINDOWS MEDIA PLAYER SHARING TURNED OFF



© Darry D Eggleston, 813.677.2871, DarryD@darryd.com

Click on any blue, underlined text to go to its linked reference.

Windows Media Player 11 can share media between different computers on the same network, and can even share media with the XBox 360 as well. For this to work, there's a network sharing service in Windows that shares the library even if Media Player isn't open. It's really a great system if you use it.

NOTE: Both *wmpnscfg.exe* and *wmpnetwk.exe* are part of the Windows Media Player Sharing system, so if you use those features you should not disable it. *These steps are for turning it off in Windows Vista.*

The purpose for turning them off is to reduce the drain on random access memory (RAM) caused by programs that are running, but don't offer any benefit for it or could cause a security violation if left running.

The best way to remove these services is to use the Media Player configuration panel so that they don't come back the next time gets opened.

1. Open Windows Media Player by Left-clicking on Start ► All Programs ► Windows Media Player.

¹ Editors: Peggy S. Eggleston, Dick Evans & Parker Monroe. Permission for reproduction in whole or in part is granted to individuals and to organizations for internal, non-profit use provided credit is given to the author along with the copyright notice: Article reprinted with permission. Copyright © 2008 Darry D Eggleston, <http://DarryD.com>.

2. Left-click on the arrow under the “Library” and then on the “Media Sharing” option (**Figure 1**).

NOTE: If you are using a custom theme or you can't get to that menu, you can also open the Options panel, choose the Library tab, and then click on the “Configure Sharing” option.

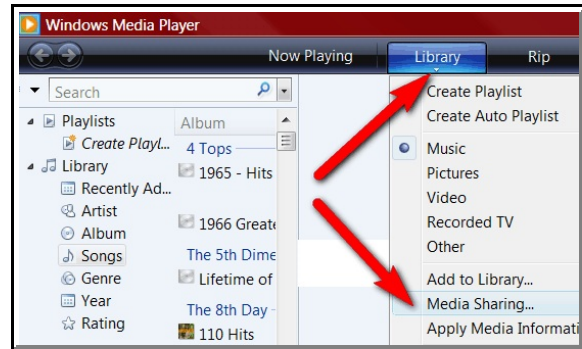


Figure 1

3. The “Media Sharing” dialog appears. Uncheck both of the boxes (**Figure 2**).

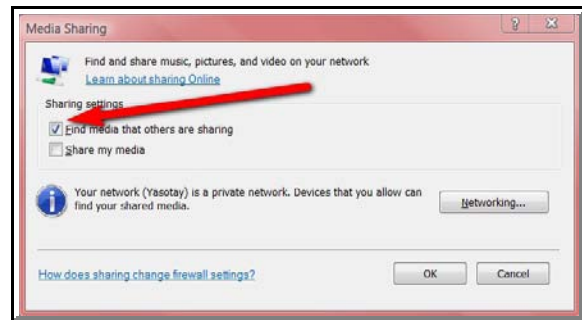


Figure 2

4. The “Media Sharing” dialog asks, “Do you want to turn sharing off for everybody who uses this computer?”

Left-click on the “Yes” button (**Figure 3**).

NOTE: This is what actually turns off the service, and removing the Start-up entry for wmpnscfg.exe.

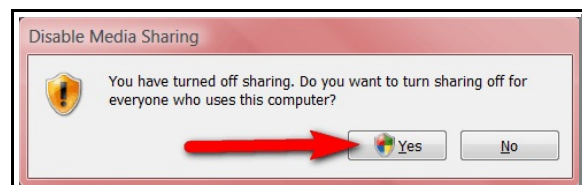


Figure 3

5. Restart your PC.