

SETUP UP THE PROCESS

© Darry D Eggleston, 813.677.2871, DarryD@darryd.com

Click on any blue, underlined text to go to its linked reference.



Before you begin to scan using OmniPage, you need to set up the *process* of how you want to proceed each time you scan. Here's how to set it up.

1. From the MenuBar, left-click on Process ► Get Page ► Scan (Figure 1).

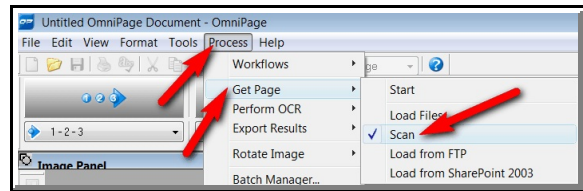


Figure 1

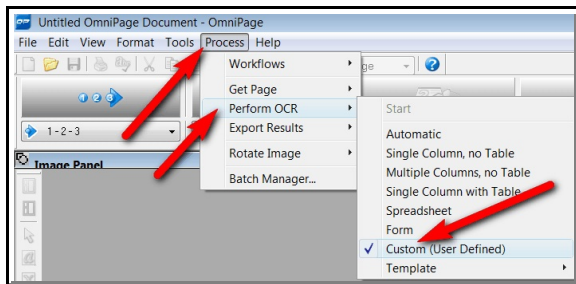


Figure 2

2. From the MenuBar, left-click on Process ► Perform OCR ► Custom (User Defined) (Figure 2).

3. From the MenuBar, left-click on Process ► Export Results ► Copy to Clipboard (Figure 3).

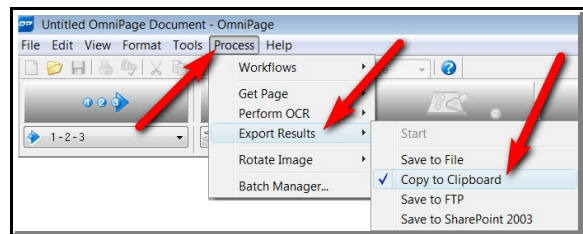


Figure 3

4. Once you've completed these steps, you're ready to begin using this optical character reader (OCR) program.

¹ Editors: Peggy S. Eggleston & Parker Monroe. Permission for reproduction in whole or in part is granted to individuals and to organizations for internal, non-profit use provided credit is given to the author along with the copyright notice: Article reprinted with permission. Copyright © 2008–2010 Darry D Eggleston, <http://DarryD.com>.