

# LIGHTSCRIBE DISC PRINTING

© Darry D Eggleston, [DarryD@darryd.com](mailto:DarryD@darryd.com)  
Click on the blue, underlined text to go to its linked reference.<sup>1</sup>



This lesson describes how to burn a LightScribe disc on my HP Pavilion dv7 Laptop. The instructions on your PC or laptop may vary, but the steps should be the same.

1. When you insert a disc — label side down — you'll see the Template Labeler popup (**Figure 1**). Either left-click on the “OK” button or touch the Enter key on your keyboard.



Figure 1

2. If you've already created a custom template, click on “Open” button in upper right corner (**Figure 2**).

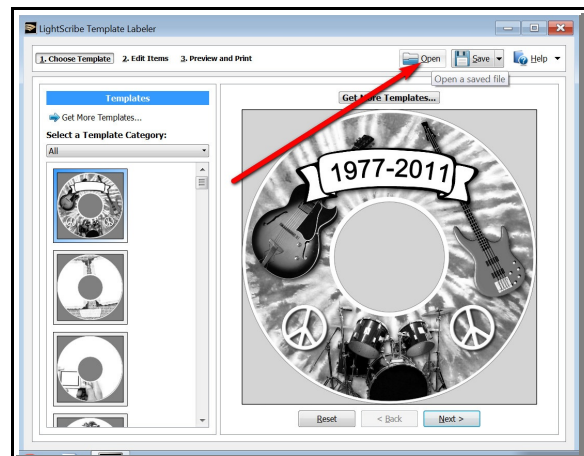


Figure 2

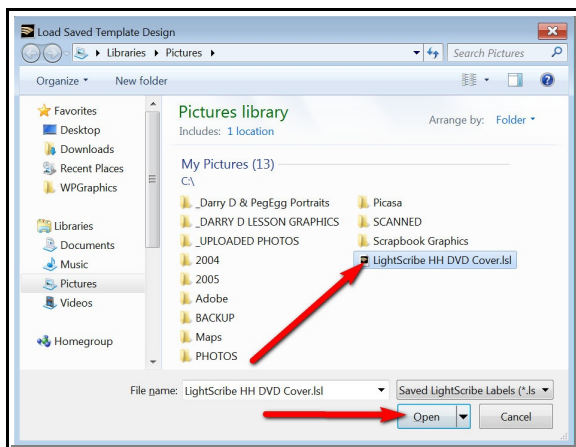


Figure 3

3. Select the template (**Figure 3**):  
① Left-click on file name.  
② Left-click on “Open” button.

<sup>1</sup> Permission for reproduction in whole or in part is granted to groups and organizations for internal, non-profit use provided credit is given to the author along with the copyright notice: Article reprinted with permission. Copyright © 2011 Darry D Eggleston, <http://DarryD.com>.

4. The template will be shown (Figure 4). Left-click on “Preview and Print” button.

If you selected the wrong template or you wish to make changes, use the options on the left pane or Left-click on “< Back” button at the bottom.

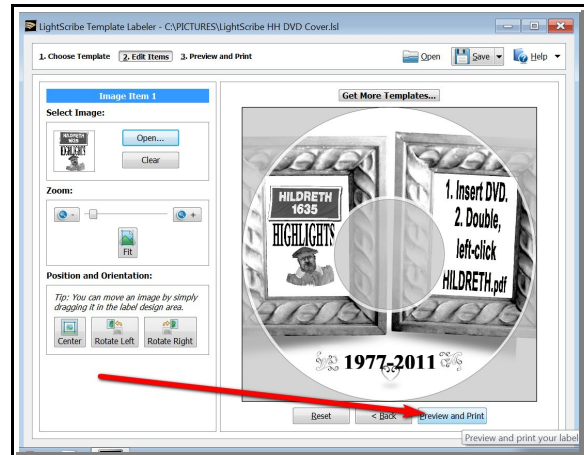


Figure 4

5. The “Print Options” window appears (Figure 5).

- ❶ The print preview is shown.
- ❷ The estimated print time is shown. This is an estimate. For example, my disc shows 21 minutes; but, when I timed it, 23 minutes were required.
- ❸ You can select a different color. The color should match the actual color on the disc. The default is gold.
- ❹ You can select any number of copies to be printed.
- ❺ Either left-click on the “Print” button.

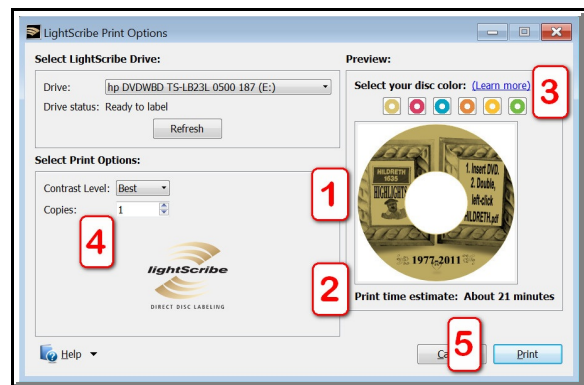


Figure 5