



# MAGIC EXTRACTOR

© Darryl D Eggleston, 813.677.2871, [DarrylD@darryl.com](mailto:DarrylD@darryl.com)

Click on any blue, underlined text to go to its linked reference.

One of the most powerful tools in Elements is the *Magic Extractor*. Here's how to use it.

1. Open a photo from which you wish to extract (remove) something for use in the same or a different photo. In **Figure 1**, I am using our royal cat, TinkerBelle.



Figure 1

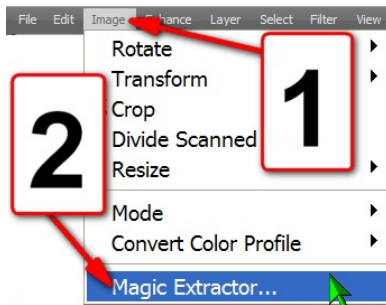


Figure 2

2. From the MenuBar, select Image > Magic Extractor... (**Figure 2**)

3. Mark what to include in the selection (**Figure 3**):

- ❶ Select the first brush.
- ❷ Left-click and release to create dots around that which you want to include.

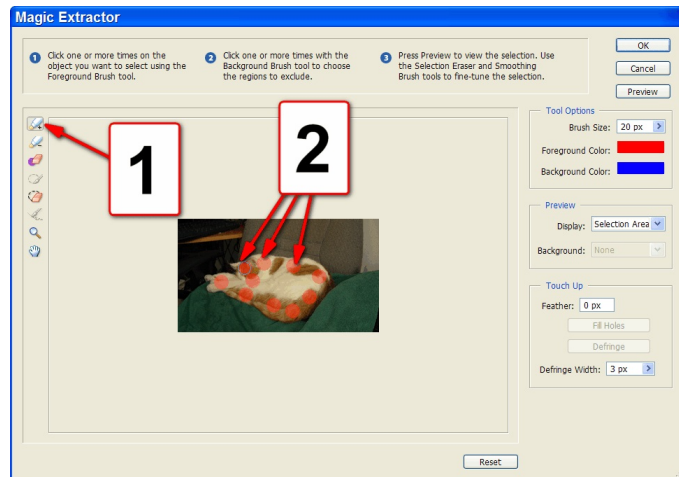


Figure 3

<sup>1</sup> Editors: Peggy S. Eggleston, Dick Evans & Parker Monroe. Permission for reproduction in whole or in part is granted to organizations for internal, non-profit use provided credit is given to the author along with the copyright notice: Article reprinted with permission. Copyright © 2008 Darryl D Eggleston, <http://DarrylD.com>.

#### 4. Select what not to include (Figure 4):

- ❶ Left-click on the second brush.
  - ❷ Left-click and release to create the dots around that which you want to exclude.
- NOTE: You can change the color of the dots that are used.

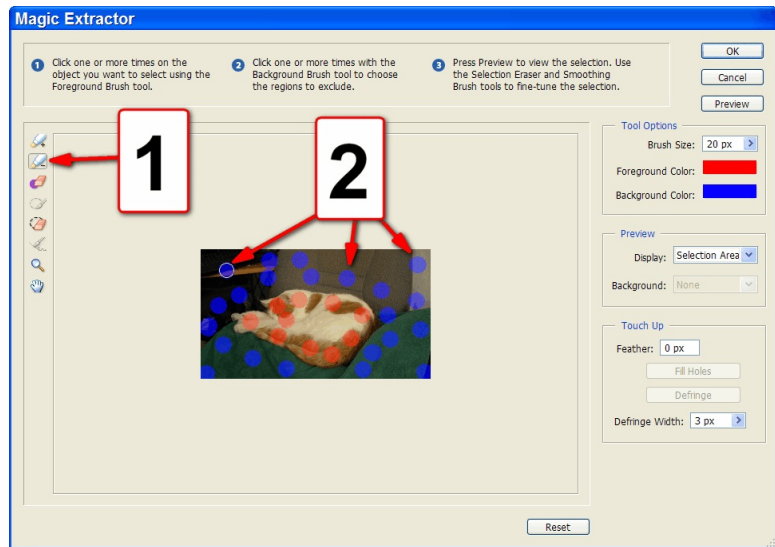


Figure 4

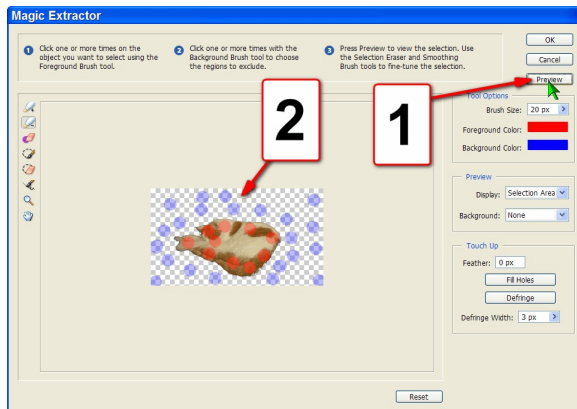


Figure 5

5. Preview your choices (Figure 5):
- ❶ Left-click on the “Preview” button.
- ❷ A preview appears.

You can continue to use either tool until you're satisfied with the result.

6. When you're happy, left-click on the “OK” button (Figure 6).

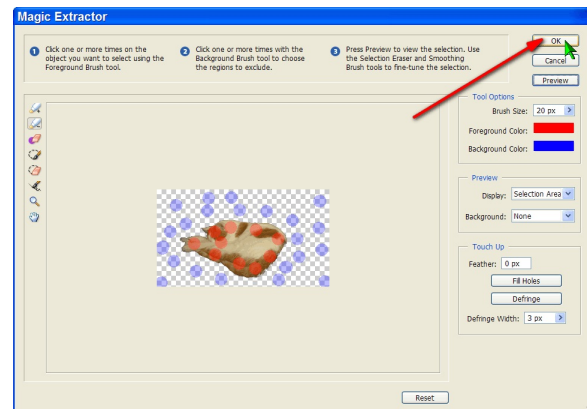
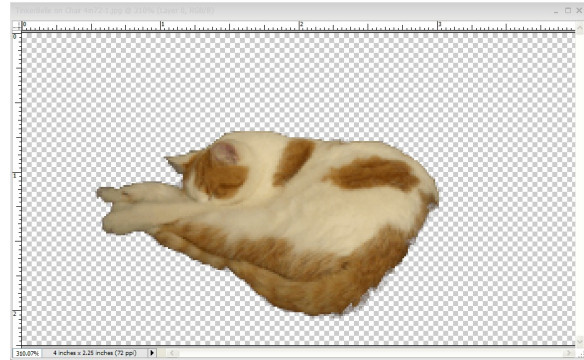
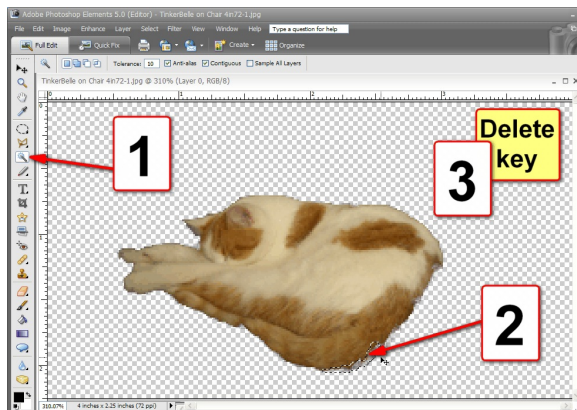


Figure 6

7. The resulting image is now devoid of all objects except the object which you selected with the red dots (**Figure 7**).



**Figure 7**



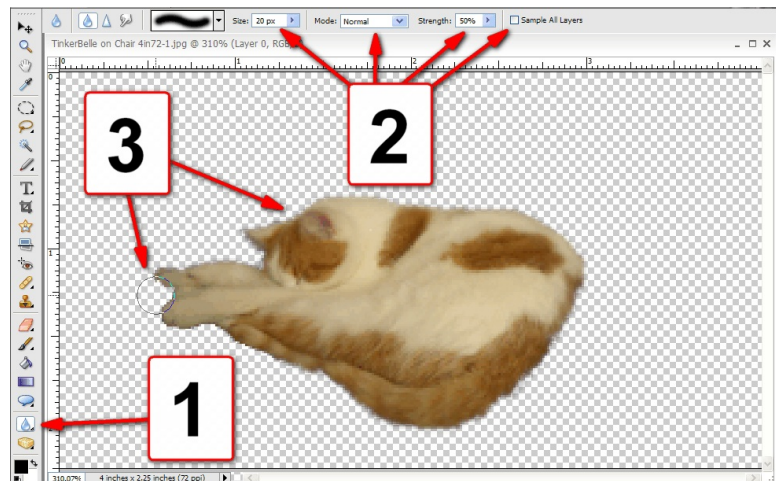
**Figure 8**

8. You may need the *Magic Wand* to clean up minor mistakes (**Figure 8**):

- ❶ Select the *Magic Wand*. (You might want to use the Magnifier to zoom in.)
- ❷ Select areas. Left-click on the first selection. Use Shift+Click to select additional areas. Use Alt+Click to remove unwanted sections.
- ❸ Touch the “Delete” key on the keyboard.

9. Now use the Blur tool (**Figure 9**):

- ❶ Select the Blur tool.
- ❷ Adjust the brush’s settings as needed. I use Normal mode, and 50% strength.
- ❸ Left-click, hold, and drag around the edges of the item. This can make it much less obvious that the item was extracted from another image when the item is placed in another image.



**Figure 9**

10. Insert a new photo as a layer behind the extracted image (**Figure 10**).



**Figure 10**