


Photoshop Elements

LOAD CUSTOM BRUSHES

© Darry D Eggleston, 813.677.2871, DarryD@darryd.com



This is how to load Custom Brushes.

1. Open Photoshop Elements.
2. Click on the Brush tool ().
3. Select “Load Brushes” (**Figure 1**):
 - ① Click on the down arrow next to the brush preview.
 - ② Click on the circled arrow in the brushes drop-down menu.
 - ③ Click on “Load Brushes”.

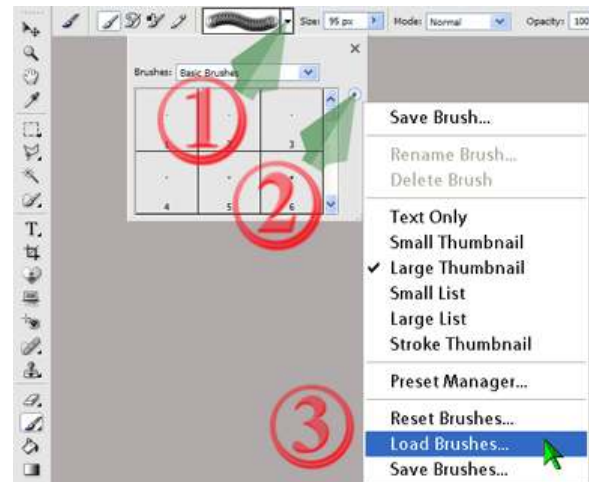


Figure 1

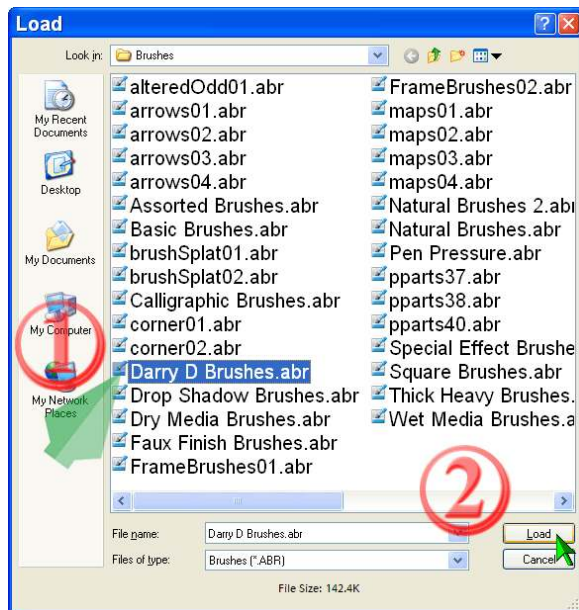


Figure 2

4. Select the Brush group (**Figure 2**):
 - ① Left-click on the group.
 - ② Left-click on the “Load” button.
5. Now when you select brushes and click on the down-arrow, you’ll see the brushes you selected (**Figure 3**).

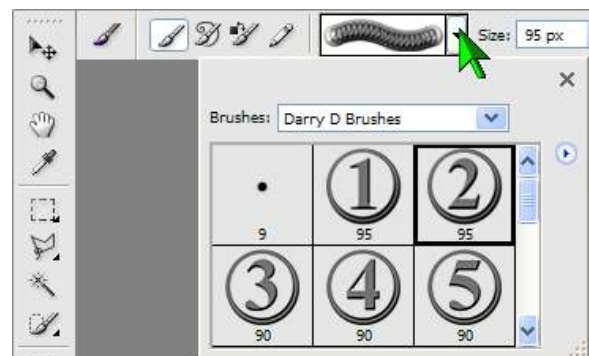


Figure 3