

Photoshop Elements 5.0

CREATE CUSTOM BRUSH FROM AN IMAGE



© Darry D Eggleston, 813.677.2871, DarryD@darryd.com

You can create a custom brush by selecting an area in a photo.

The Help in Photoshop Elements is not correct. Use this lesson.

The brush uses a grayscale version of that selection to apply the foreground color in your image.

For example, you could select a leaf and then paint using a fall color. You can also draw a new brush shape using the Brush tool. You can create a custom brush shape either from an entire layer or from a selection.

A custom brush shape can be up to 2500 pixels by 2500 pixels in size.

Do this:

1. Make a selection:
 - ▶ To use part of the image as a custom brush, select part of an image.
 - ▶ To use the entire layer as the custom brush, deselect everything.
 - ▶ Use the painting tools to draw the brush shape and select it. You can use hard-edged or soft-edged strokes, or vary the opacity of strokes to achieve soft-edge effects.
2. Click on the Brush tool.
3. From the MenuBar, select Edit > Define Brush
4. Name the brush and click OK.

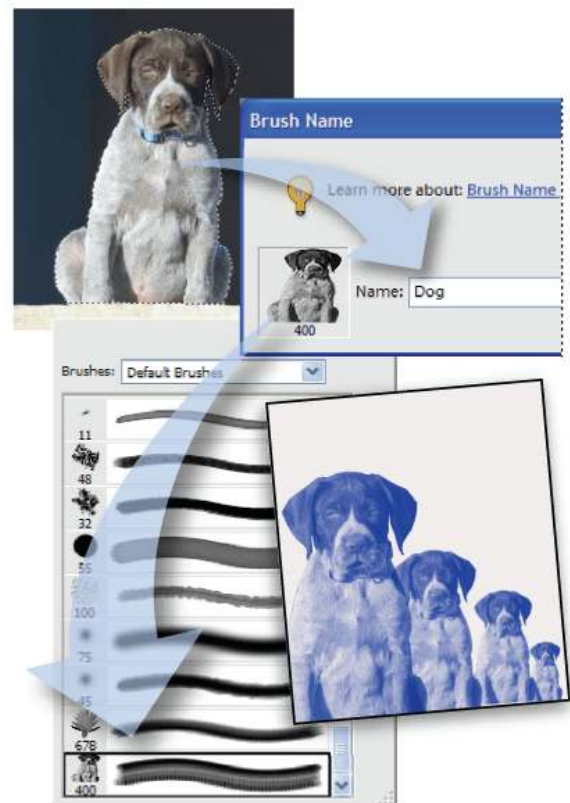


Figure 1

5. Once you've created a brush and added it to your collection, you need to save the Brush Preset (**Figure 2**):

- ❶ Click on Brush tool.
- ❷ Click on the drop-down arrowhead next to the Brush Presets.
- ❸ Click on the circled arrowhead to see the drop-down menu.
- ❹ Click on "Save Brushes..."

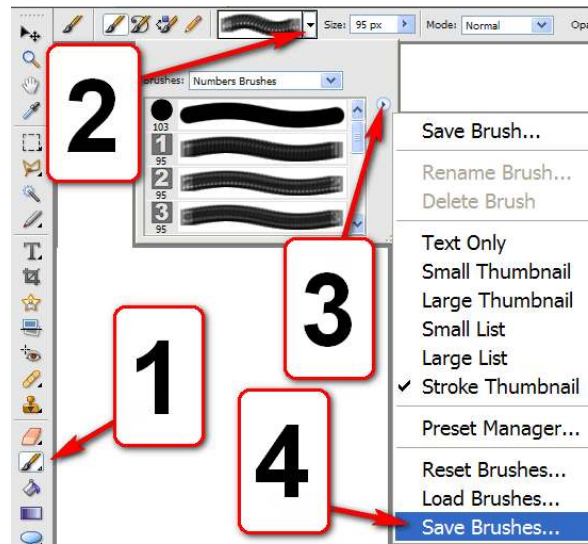


Figure 2



Figure 3

6. The Brushes are stored in the folder (**Figure 3**) C:\Program Files\Adobe\Photoshop Elements\Presets\Brushes. From there, you can share them with friends. Each Brush Preset ends in the extension '.abr'.

7. There are 15 Brush Presets in my collection (**Figure 4**). I created the highlighted collections:



Figure 5

- ❶ The Numbers Brushes give me quick access to numbers for lists in slides (**Figure 5**).
- ❷ The Signatures Brushes are where I stored my digital signature.

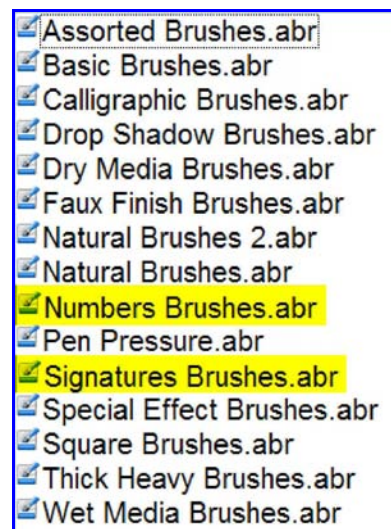


Figure 4