

# Adobe Photoshop Elements 3 PRINT EDITED PHOTO

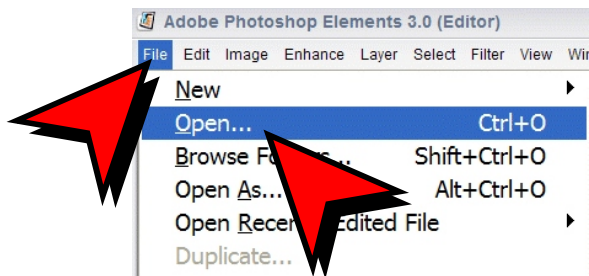
Darry D Eggleston, [DarryD@earthlink.net](mailto:DarryD@earthlink.net)  
813-677-2871 — <http://home.earthlink.net/~darryd>

In Photoshop Elements, you can re-size photos within the print menu.

1. Open Photoshop Elements using “Edit and Enhance Photos” (**Figure 1**).



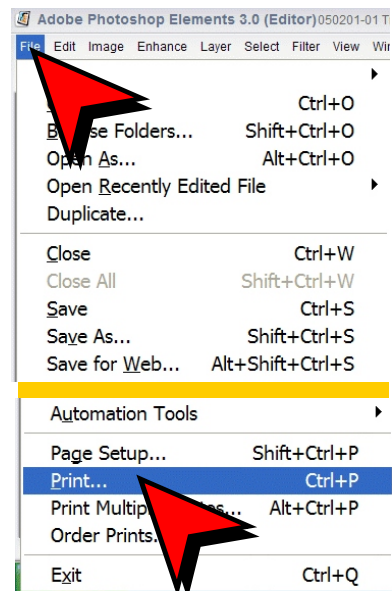
**Figure 1**



**Figure 2**

2. From the MenuBar, select File > Open (Figure 2).

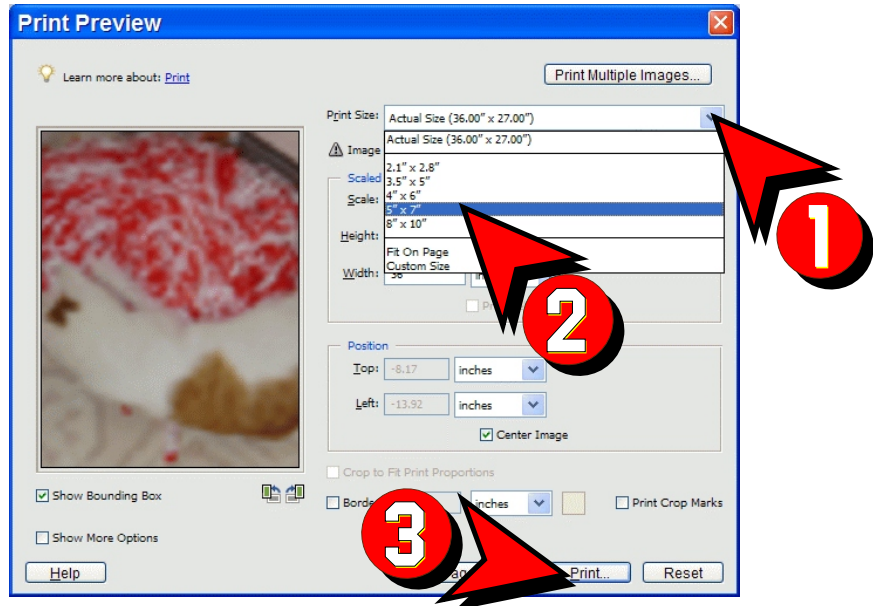
3. After you've got the photo you want on the screen, it doesn't matter what size it is, you can change the size in the Print menu. From the MenuBar, select File > Print... (Figure 3).



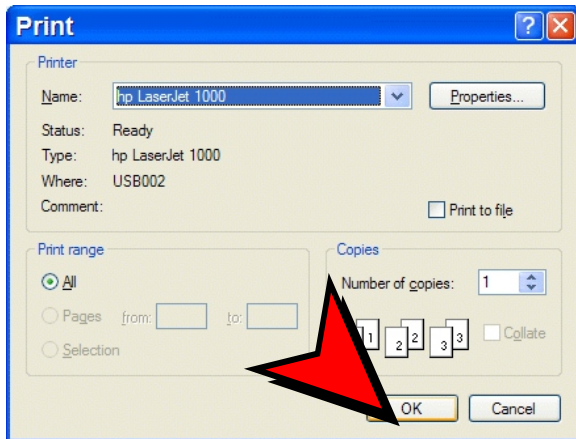
**Figure 3**

4. In the “Print Preview,” click on the down arrow next to “Print Size” and select the size you want (**Figure 4**).

Click on the “Print” button when you’re finished.



**Figure 4**



**Figure 5**

5. Ensure you have selected the printer that you want and, then click on “OK” button (**Figure 5**).