

# Photoshop Elements 3.0 CREATE DEFAULT PHOTO FOLDER



© Darry D Eggleston, 813.677.2871, [DarryD@darryd.com](mailto:DarryD@darryd.com)  
Click on any blue, underlined text to go to its linked reference.<sup>1</sup>

Unless you tell the program otherwise, Adobe Photoshop Elements 3.0 places all photos into a folder that it creates.

If you're like me, you want a folder dedicated to all the photos that you upload from your camera to the computer *and* you don't want it inside some other program. You want it as a separate folder on the hard drive. In my case, that is C:\PHOTOS.

Here's how to tell Photoshop Elements where to place photos.

1. From the MenuBar, in the Organizer, select File > Preferences > Camera or Card Reader (**Figure 1**).

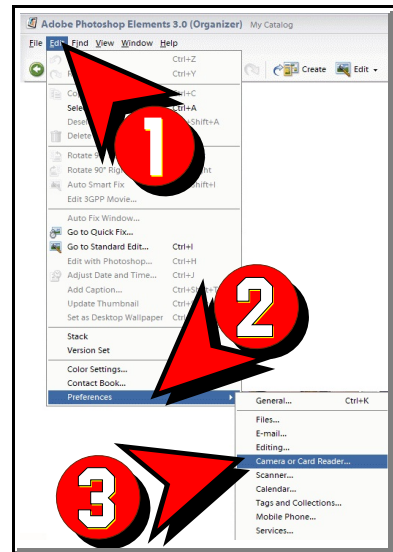


Figure 1

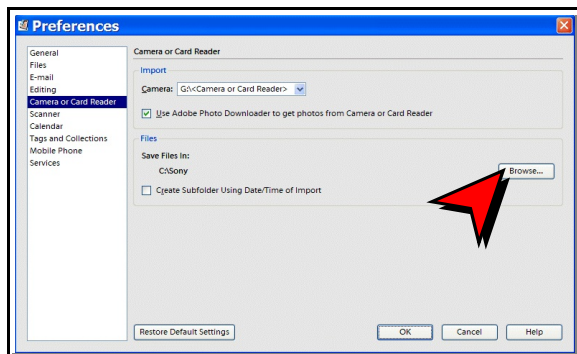
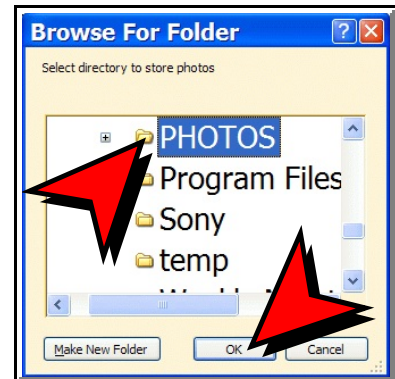


Figure 2

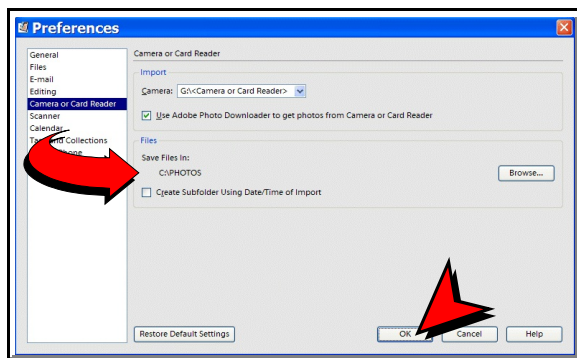
2. Click on the "Browse" button (**Figure 2**).

<sup>1</sup> Editors: Peggy S. Eggleston, Dick Evans & Parker Monroe. Permission for reproduction in whole or in part is granted to individuals and to organizations for internal, non-profit use provided credit is given to the author along with the copyright notice: Article reprinted with permission. Copyright © 2008 Darry D Eggleston, <http://DarryD.com>.

3. Click on the folder you want to use and, then, click on the “OK” button (**Figure 3**).



**Figure 3**



**Figure 4**

4. Your selection is revealed in the Preferences window (**Figure 4**).

5. Each time you upload photos, you’ll be given an opportunity to create a subfolder within that folder.