

# Photoshop Elements

## PRINT PHOTOS 2 — ADD BORDER



© Darry D Eggleston, 813.677.2871, [DarryD@darryd.com](mailto:DarryD@darryd.com)

NOTE: This lesson begins at the end of my lesson  
“Print Photos — Picture Package”.

1. After I have picked photos and selected File > Print, I can select “More Options” (Figure 1).

2. Here I Left-click on “Add a Border” (Figure 2).

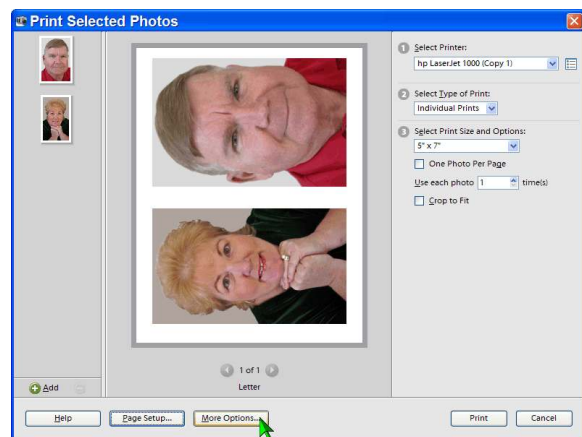


Figure 1

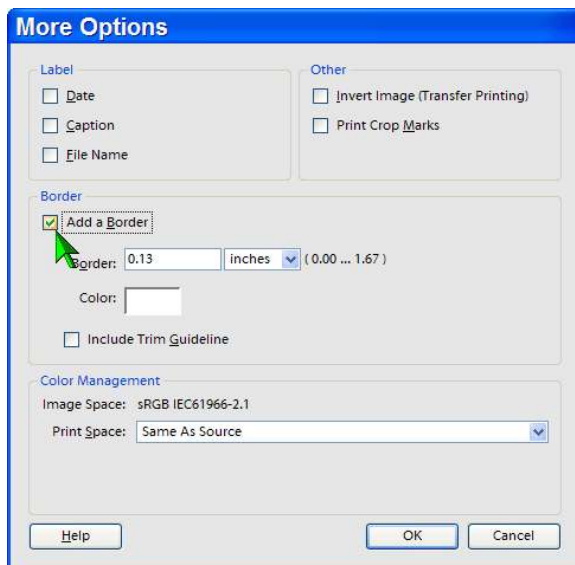


Figure 2

3. I can change the default color if I Left-click on “Color” box (Figure 3).

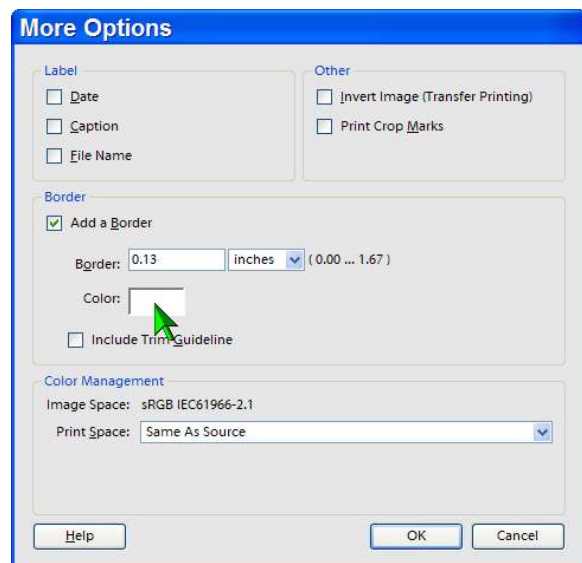


Figure 3

4. Select a color:

❶ Click your selection in the large, colored window (Figure 4).

You can modify your selection by left-clicking in the vertical color bar.

❷ Then, Touch the *Enter* key, on the keyboard, or click on the “OK” button.

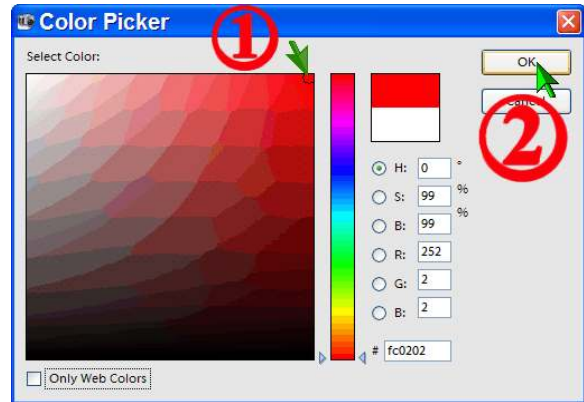


Figure 4

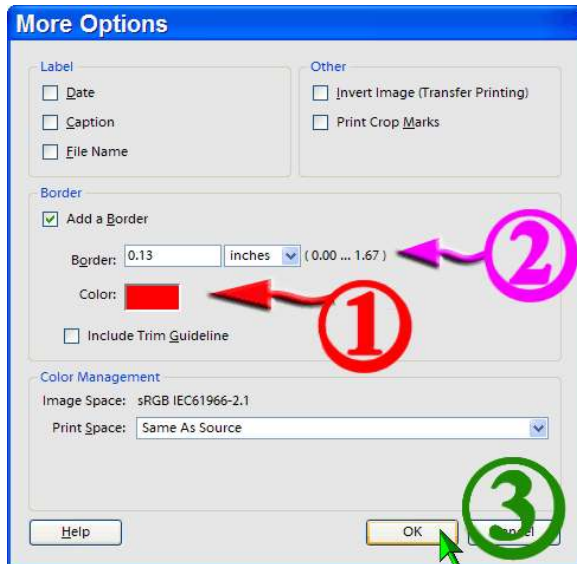


Figure 6

5. “More Options” window reappears (Figure 5):

❶ The new color shows in the Color box.

❷ You can change the width of the frame by changing the width.

❸ Touch the *Enter* key, on the keyboard, or click on the “OK” button when you’re satisfied..

6. The new frame appears in the “Print Selected Photos” window (Figure 6).

Touch the *Enter* key, on the keyboard, or click on the “OK” button.

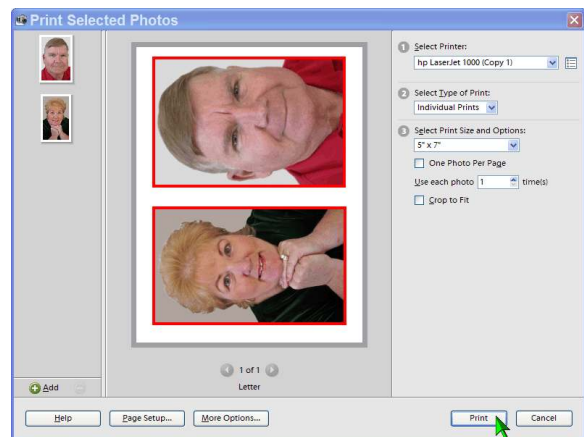


Figure 6