

Photoshop Elements 5

EDIT & ENHANCE SETTINGS

© Darry D Eggleston, 813.677.2871, DarryD@darryd.com



The key to success in any software program is selecting Settings that work best for you. Here are my recommendations for settings in the Edit and Enhance portion of Elements.

NOTE: All the graphics have been modified to increase the size of the print.

1. To change the preferences in the “Edit and Enhance” section of Elements, select Edit > Preferences > General.

2. GENERAL (Figure 1).

❶ Export Clipboard. Ensure you leave the ✓ next to so that anything you select and copy from within a document can be exported to other programs.

❷ Show Tool Tips shows tips when the cursor hovers over a tool.

❸ Save Palette Locations records places where you move palettes. Otherwise, the default locations return every time you restart the program.

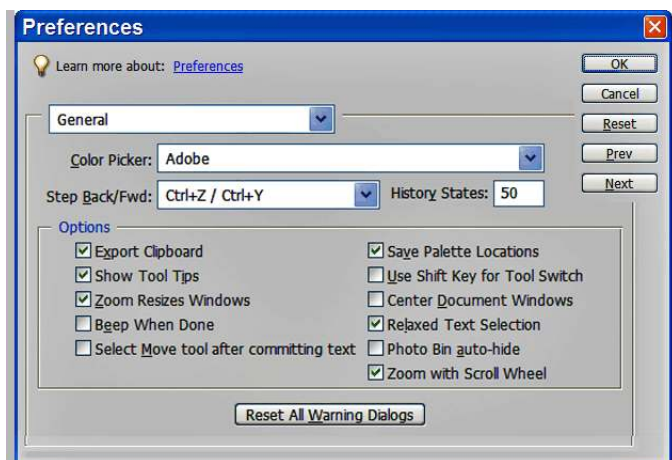


Figure 1

3. SELECT NEXT CATEGORY.

When you’ve completed “General,” do not click on the OK button. Instead, select the next category (Figure 2).

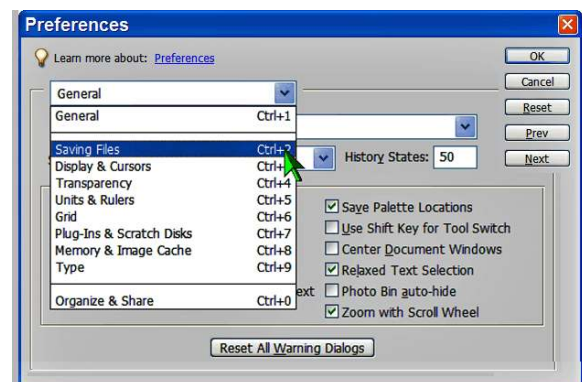


Figure 3

4. Saving Files (Figure 3). Make no changes to the defaults for this preference.

5. Display & Cursors (Figure 4). Make no changes to the defaults for this preference.

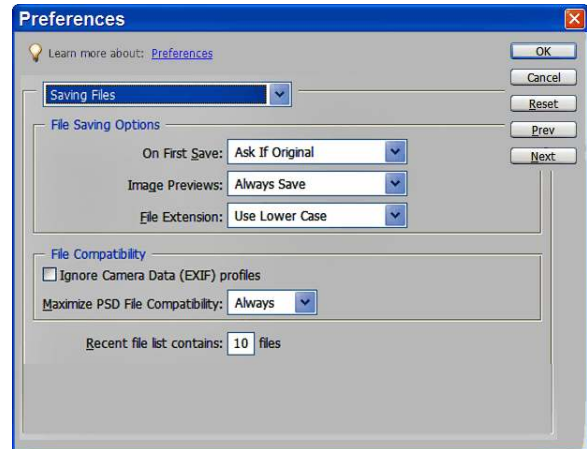


Figure 3

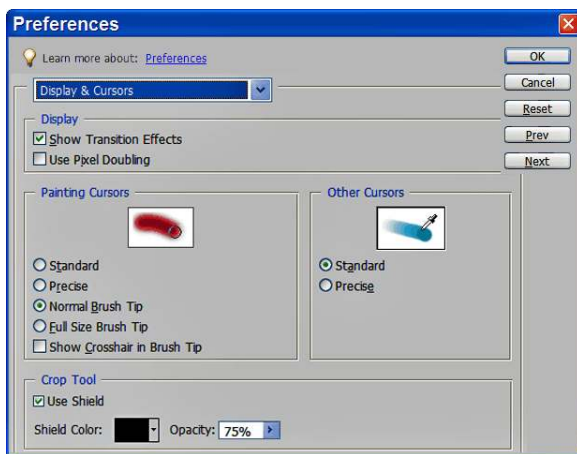


Figure 4

6. Transparency (Figure 5). Make no changes to the defaults for this preference.

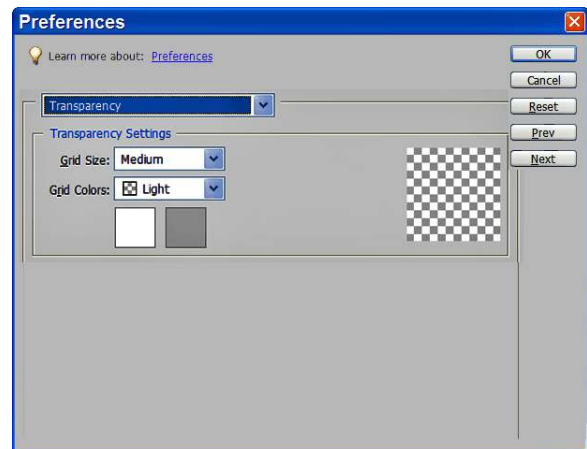


Figure 5

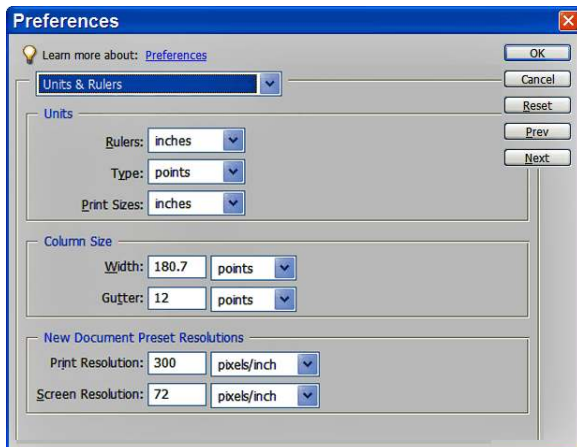


Figure 6

7. Units & Rulers (Figure 6). Make no changes to the defaults for this preference.

8. Grid (Figure 7). Make no changes to the defaults for this preference.

9. Plug-ins & Scratch Disks (Figure 8). If you have a drive that has more space than the C drive, you're better served by making the First Scratch Disk that drive. Make the C drive the second drive.

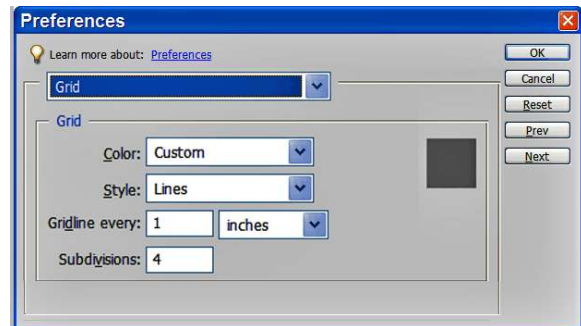


Figure 7

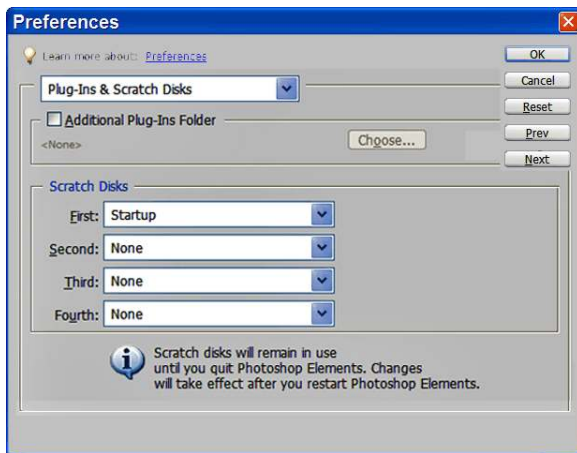


Figure 8

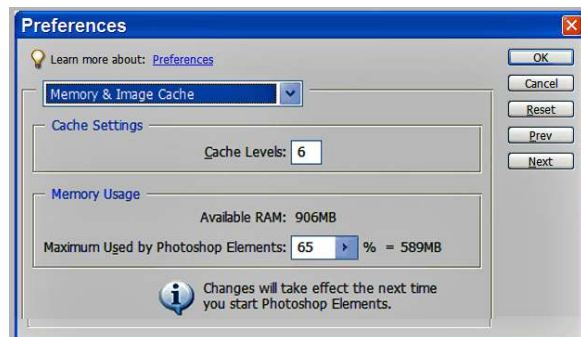


Figure 9

10. Memory & Image Cache (Figure 9). If you don't open many programs at the same time, make the "Maximum Used..."

11. Type (Figure 10). I modified the "Font Preview Size" to Large. Thus, when I select Font Faces, I see much larger previews than the default Medium.

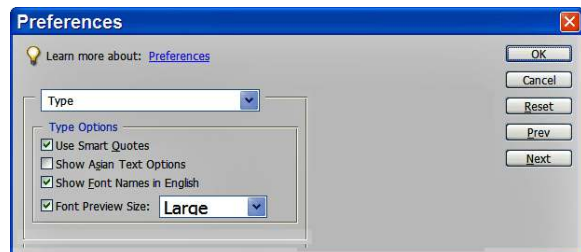


Figure 10

12. Organize & Share (Figure 12).

When you click on this choice, you are taken to the Organizer. It will take awhile for the Organizer to open, so have patience.

See my lesson, “Organizer Preferences”.

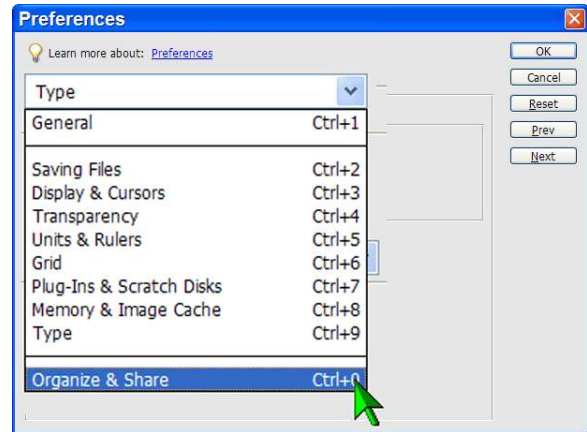


Figure 12