

Adobe Photoshop Elements EDIT & ENHANCE PHOTOS SETUP



© Darry D Eggleston, 813.677.2871, DarryD@darryd.com

With the increasing popularity of Photoshop Elements, it important that users know how to set up the program for maximum effectiveness *before* they begin using it. This article describes those procedures.

1. NEW PROJECT SCREEN

IF you select “New Project,” this is the screen you will see (**Figure 1**).

2. TURN OFF “SNAP TO GRID”

From the MenuBar, select View > Snap to Grid. IF there is a check there, click to remove it. Snap to Grid restrains your editing to click-and-drag, such when using the Rectangular Marquee Tool, to predetermined points. Removing it permits easier be specific when you make selection.

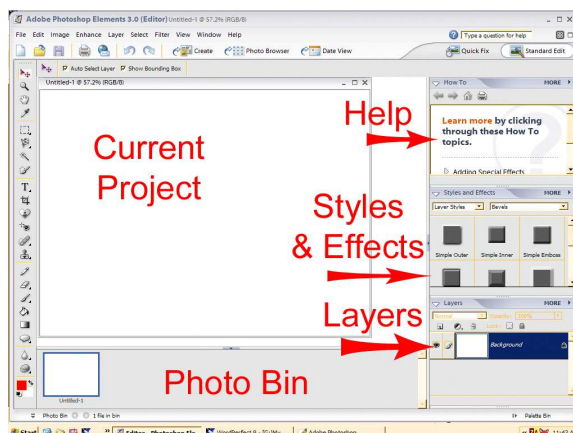


Figure 1

3. HIDE “PHOTO BIN”

The Photo Bin, at the bottom of the screen, serves to show the photos you are currently working on. Hide it (**Figure 2**):

- 1 RIGHT-click in Photo Bin area.
- 2 Left-click on “Auto-Hide.”



Figure 2

4. MINIMIZE HELP PALETTE

I recommend you minimize the Help palette. To do so, click on the downward arrow (**Figure 3**) on the left-side of that palette.

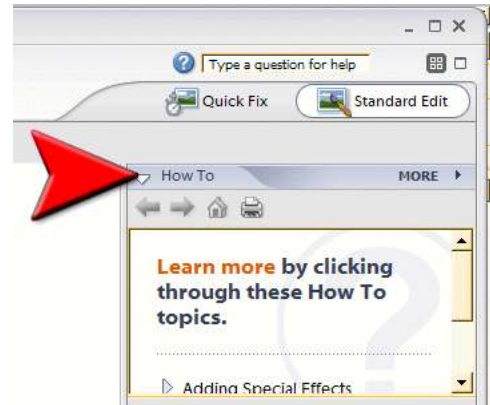


Figure 3

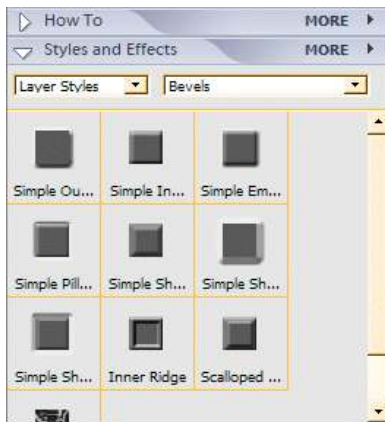


Figure 4

This permits easier viewing of the Styles & Effects palette. The default for the Styles & Effects palette is the Thumbnail View, but it is not very practical (**Figure 4**).

5. CHANGE STYLES & EFFECTS VIEW

Change the Styles & Effects to the List View (**Figure 5**):

- ❶ Click on “More ►”
- ❷ Click on “List View.”



Figure 5

6. NEW PROJECT SETTINGS

IF you select “New Project,” you’ll see a settings window (**Figure 6**). Here you can give the project a name and change its size.

Once you click on the “OK” button, you’ll see the working space in Figure 1.

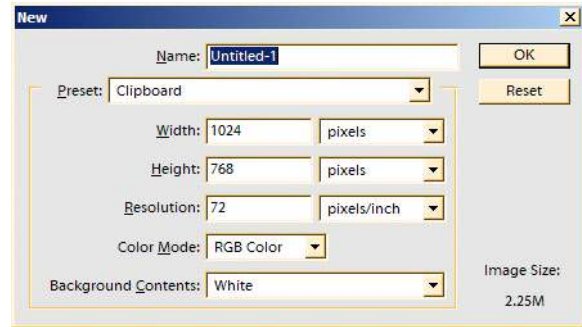


Figure 6

7. CREATE NEW LAYER

When I typed my name — after selecting the Typing Tool **T** — a new layer was created (Figure 7).

When you click on a creation tool, such as the Type Tool — a new layer is created.

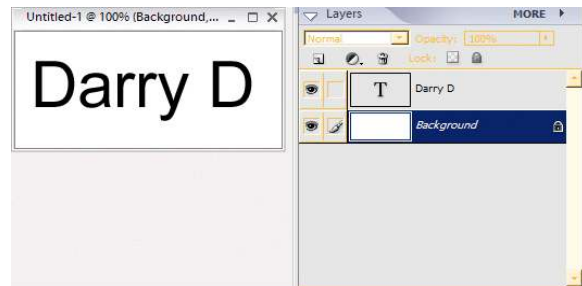


Figure 7

8. FLATTEN LAYERS

IF I want to save the work as a Joint Photographic Experts Group (JPEG/JPG) photo, I need to “flatten the layers” (Figure 8). To do it:

- ❶ RIGHT-click on the downward arrow-head in the Layers palette.
- ❷ Click on “Flatten Image.”

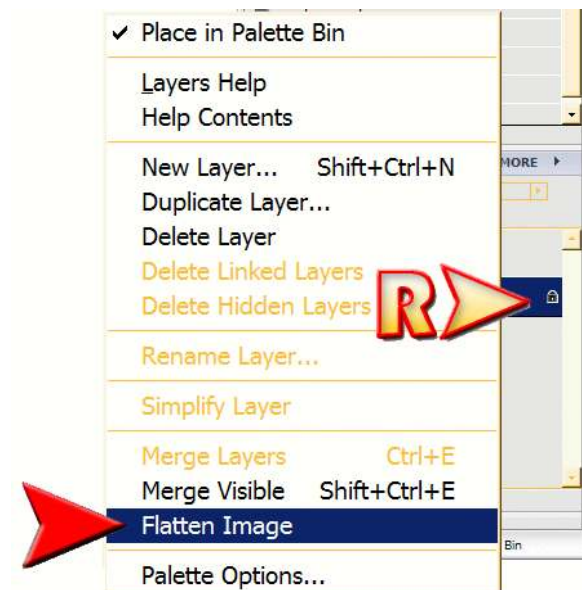


Figure 8

9. SAVE WORK

➤ IF you want to continue working on a project, save it as a Photoshop Graphic (PSD) as in **Figure 9**.

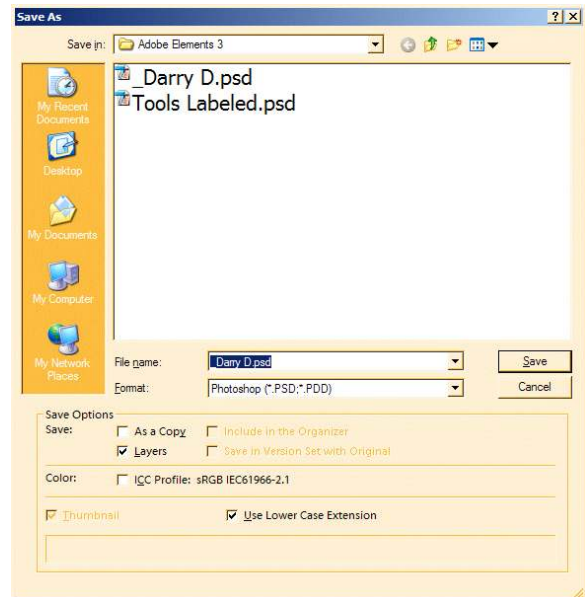


Figure 9

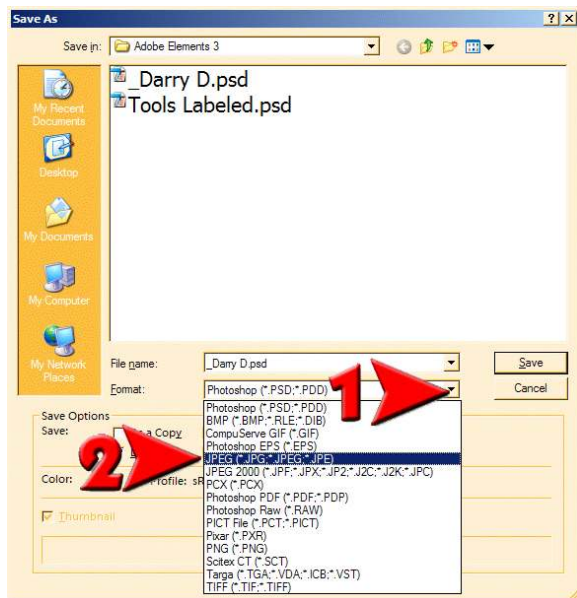


Figure 10

⇔ IF you want to share the work as a joint photographic experts group (JPG), be sure that you “Save As” a JPG (**Figure 10**).