

Photoshop Elements 5.0 LAYERS

© Darry D Eggleston, 2006, DarryD@darryd.com



One of the fundamental techniques in Elements is layers. As simple as it is, once you understand it, it is the most difficult for most people to understand.

This is my attempt to explain it.

1. The photo of this handsome, debonair hero (Figure 1) was opened in the Editor of Elements.

Note that there is only one layer showing (highlighted in blue) in the “Layers” palette.



Figure 1

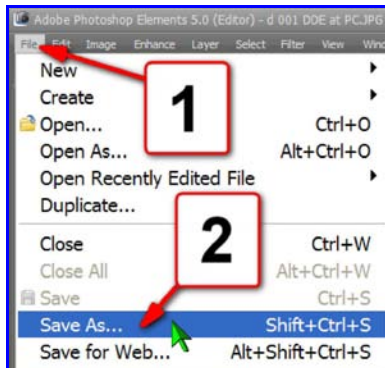


Figure 2

2. The first thing I do is use File > Save As (from the MenuBar) to make a new photo. Thus, if I make a mistake, it will not affect the original photo.

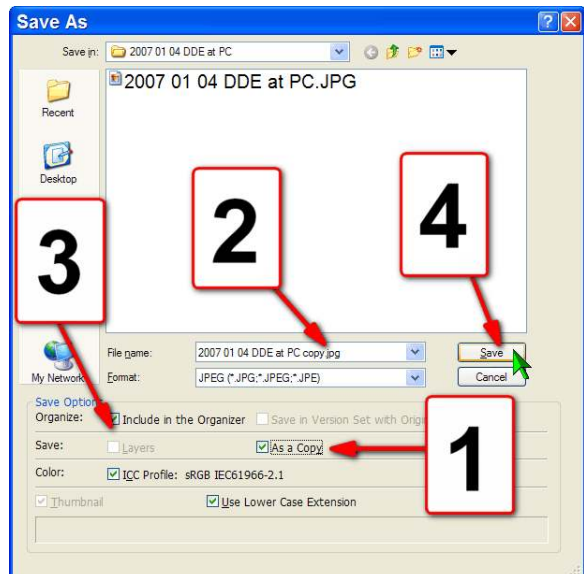


Figure 3

3. In the Save As window (Figure 3):
① Place a ✓ next to “As a copy.”
② Elements adds “Copy” to the end of the file name.
③ Place a ✓ “Include in the Organizer.”
④ Left-click on “Save” button.

4. The “JPEG Options” appears (Figure 4):

- ❶ Always make the quality the highest.
- ❷ Ensure there is a ✓ next to “Preview” so that when you click on a photo, you’ll see the preview without having to open the photo.
- ❸ Click on the “OK” button.

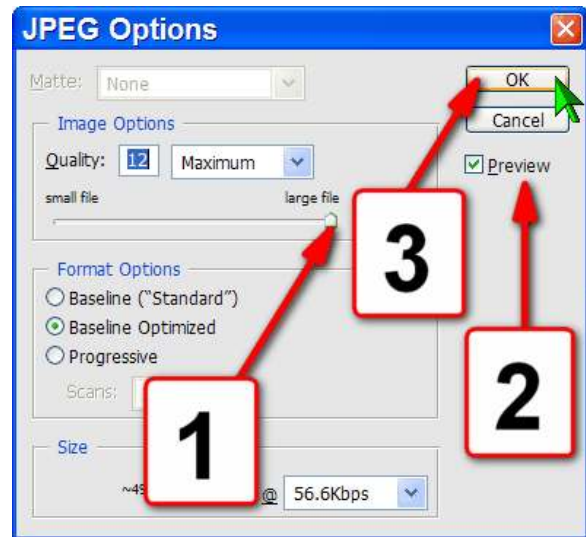


Figure 4

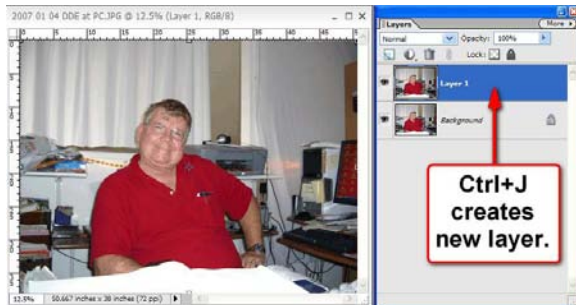


Figure 5

5. Always create a duplicate layer so that you won’t make any changes to the original layer.

The **Ctrl+J** keys, on the keyboard, create a duplicate layer.

6. At this point, **SAVE** your work by using either the **Ctrl + S** keys or, from the MenuBar, select **File > Save** (Figure 6).

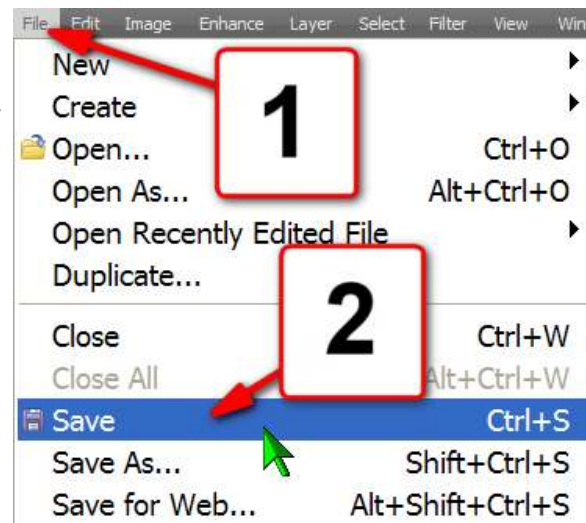


Figure 6

7. A “Save As” window (Figure 7) appears because the format of the photo has changed from a JPG to a Photoshop Graphic (PSD).

A PSD is a multilayered graphic.

- ❶ The name remains the same, but the suffix (the 3 letters after the dot) has changed.
- ❷ The PSD format shows. Do *not* change that selection.
- ❸ Left-click on “Save” button.

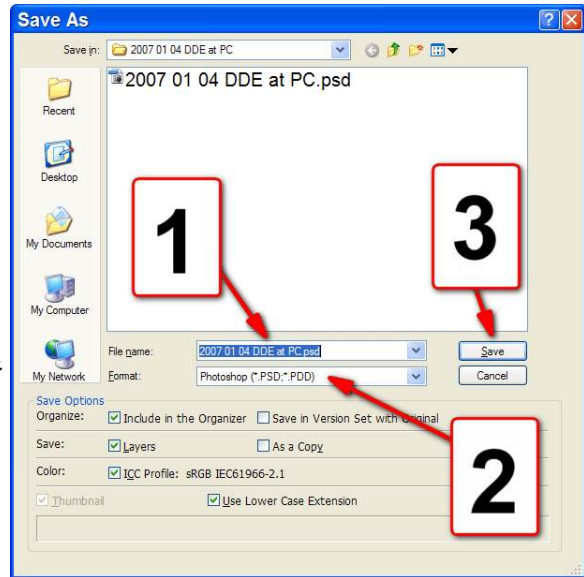


Figure 7

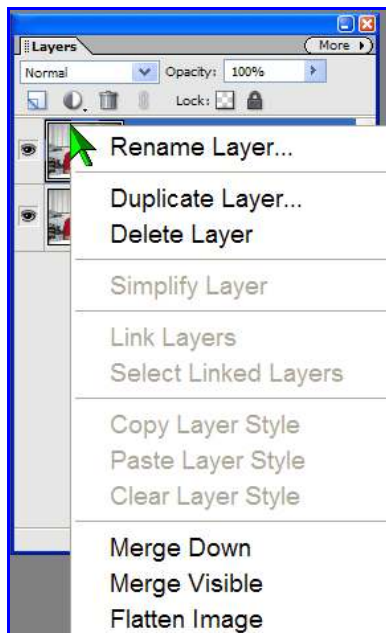


Figure 8

8. To modify a layer, RIGHT-click on it (Figure 8). You can rename, duplicate or delete a layer.

You can merge two or more layers or merge all of them (“flatten image”).

9. When you finish making all the changes you wish to make, you’ll need to flatten the photo (Figure 9):

- ❶ Click on “More” button.
- ❷ Click on “Flatten Image”.

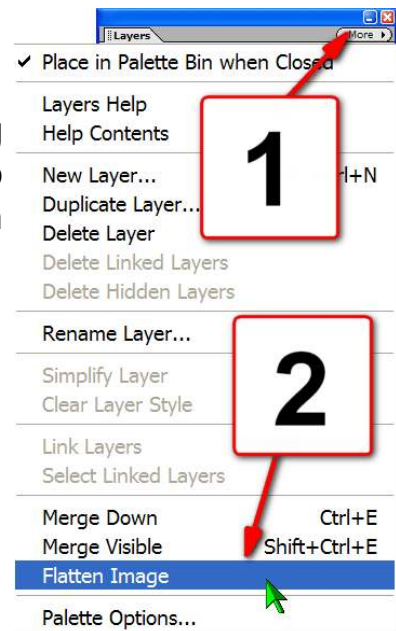


Figure 9