

FRAMES



One of the innovations of Elements 5.0 over 4.0 is the ability to add frames to artwork and to photos while in the Basic Editor (“Edit & Enhance Photos”).

1. In the “Artwork and Effects” palette, click on “Frames” in the drop-down menu and, I recommend, “All Occasions” in the other drop-down menu (Figure 1).

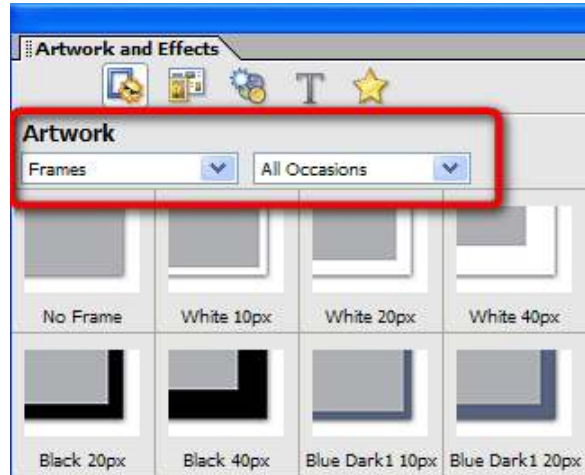


Figure 1

2. Double, left-click on the frame you want to insert (Figure 2).

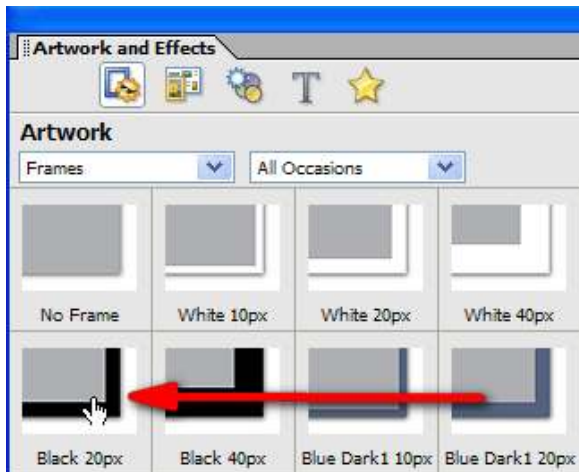


Figure 2

3. The selected frame appears in the document (Figure 3).

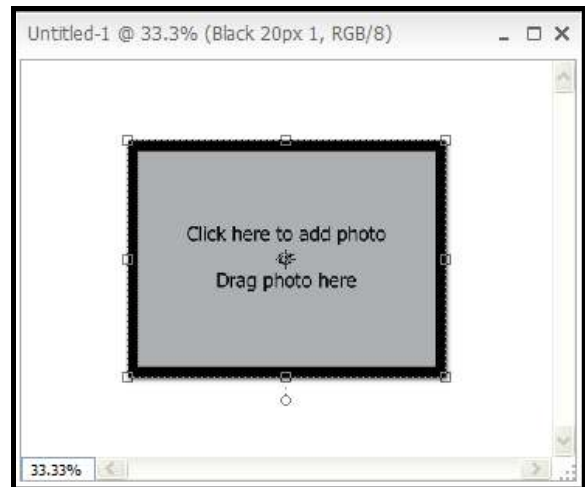


Figure 3

4. Use the Move tool (red circle) to move the frame to one of the corners (Figure 4).

5. With the Move tool at the lower-right corner, you can left-click, hold, and drag to enlarge the frame (Figure 5).

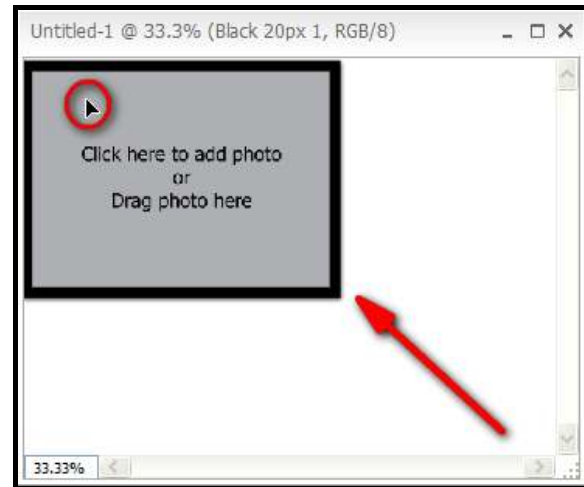


Figure 4

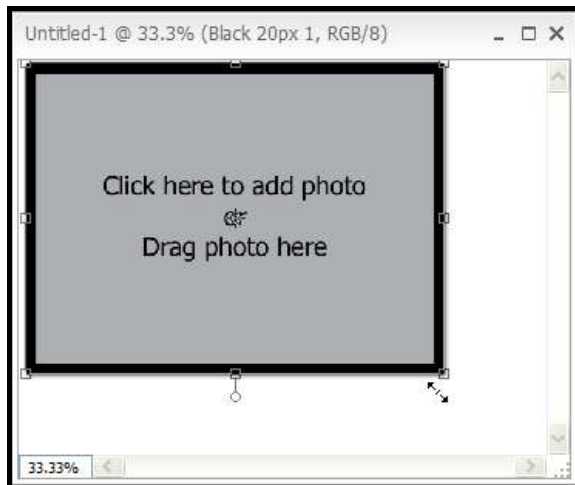


Figure 5

6. Select the graphic to insert into the frame (Figure 6):

- ① Click on the frame.
- ② Click on the graphic you want to insert.
- ③ A preview appears.
- ④ Click on "Open" button to insert the graphic.

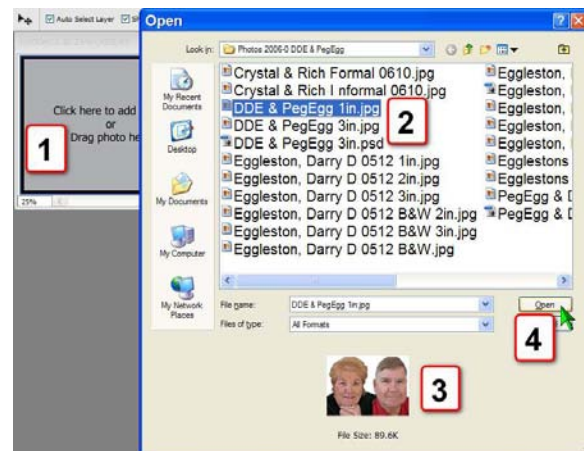


Figure 6

7. The graphic is inserted within the frame filling it (Figure 7).

8. You can left-click, hold, and drag on the slider to enlarge (to the right) or to reduce (to the left) the graphic's size (Figure 8).



Figure 7

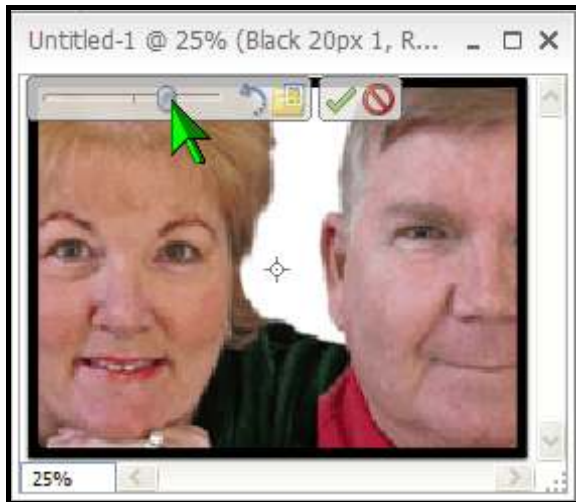


Figure 8

9. When you are satisfied, click on the green ✓ to accept changes (Figure 9).



Figure 9

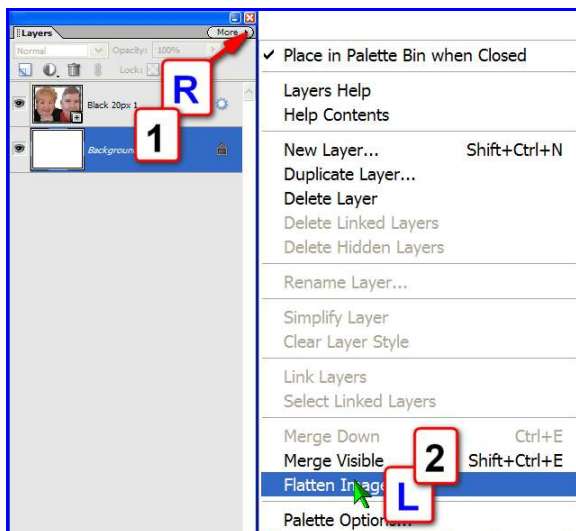


Figure 10

10. Flatten the graphic (Figure 10):
 ❶ RIGHT-click on the “More” button.
 ❷ Click on “Flatten Image”