

CREATE WEB PHOTO GALLERY

© Darry D Eggleston, 813.677.2871, DarryD@darryd.com

Click on any blue, underlined text to go to its linked reference.



This lesson shows how to create a Web Gallery, of photos that you select, on the Internet. Don't worry if you don't have a method to upload to the Web, Adobe Photoshop Elements permits you to see the finished product on your hard drive.

1. Open Photoshop Elements and click on the "Start From Scratch" icon (Figure 1).



Figure 1

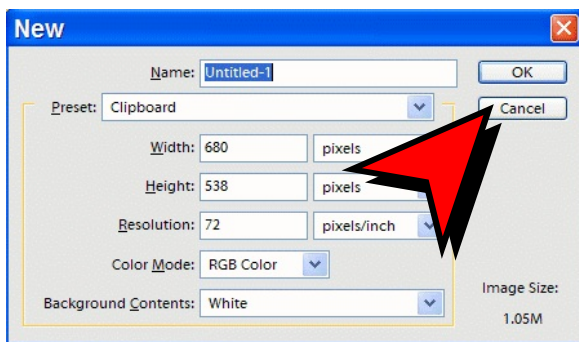


Figure 2

2. Click on the "Cancel" button to close the pop-up window (Figure 2).

¹ Editors: Peggy S. Eggleston, Dick Evans & Parker Monroe. Permission for reproduction in whole or in part is granted to individuals and to organizations for internal, non-profit use provided credit is given to the author along with the copyright notice: Article reprinted with permission. Copyright © 2008 Darry D Eggleston, <http://DarryD.com>.

3. Click on the “Create” button in the middle, top of the program window (Figure 3).

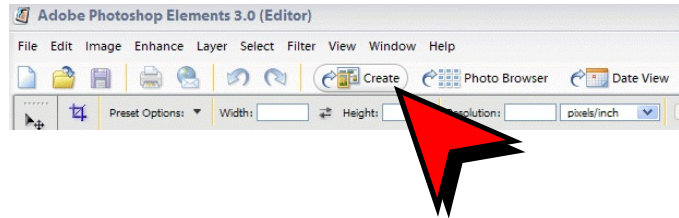


Figure 3

4. Click on “Web Photo Gallery” and then on “OK” button (Figure 4).

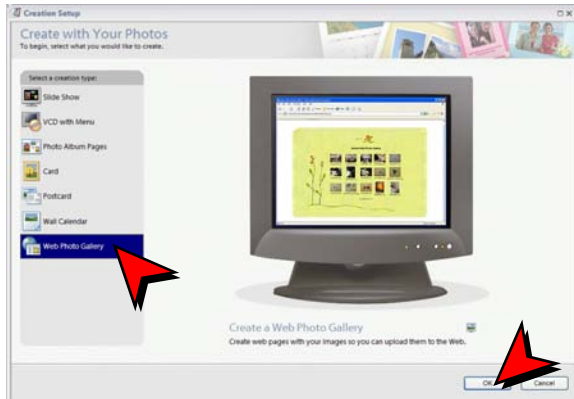


Figure 4

5. IF either — or both — of the two Windows (Figure 5) appear, click on the “Cancel” button.

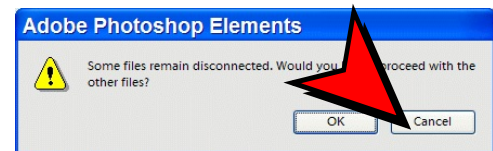


Figure 5

6. The Adobe Web Photo Gallery window appears (Figure 6).

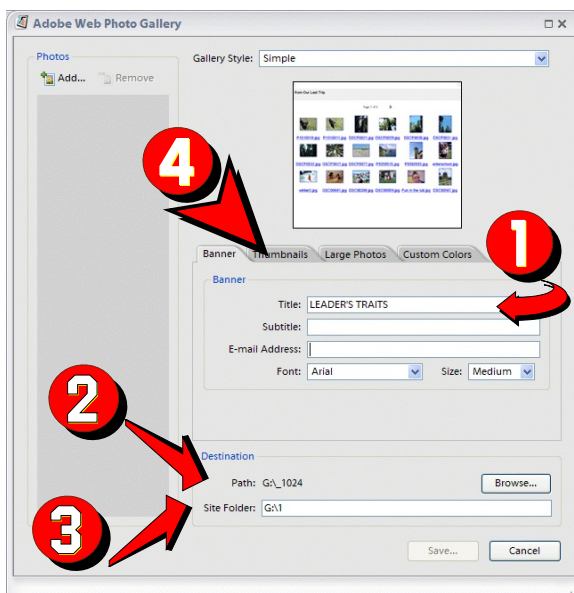


Figure 6

- ① Type the name for the Title Webpage.
- ② Ensure that the folder that contains the photos to be uploaded is correct. IF it's not, click on “Browse” button.
- ③ Type the folder into which the Webpage folders and files are to be created.
- ④ Click on the “Thumbnails” tab.

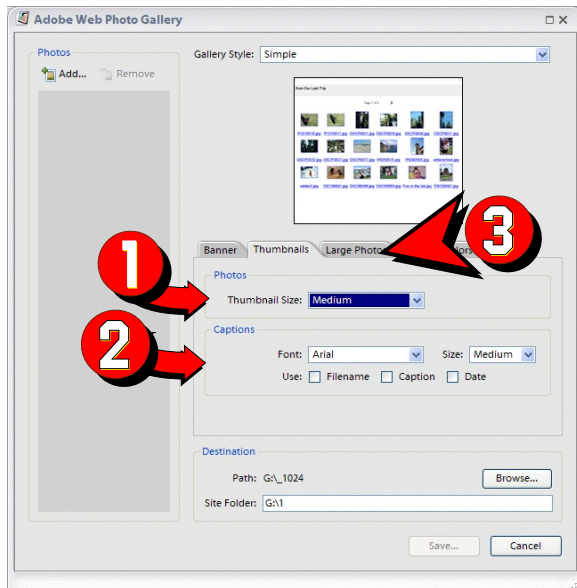


Figure 7

7. In the Thumbnails tab (**Figure 7**), you can make changes to both:

- ❶ The Thumbnail size. I recommend either small or medium.
- ❷ You can add captions. I do *not* recommend including the file name.
- ❸ Click on the “Large Photo” tab.

8. The “Large Photos” tab appears (**Figure 8**); but, I do not recommend making any changes. Just click on “Save...” button.

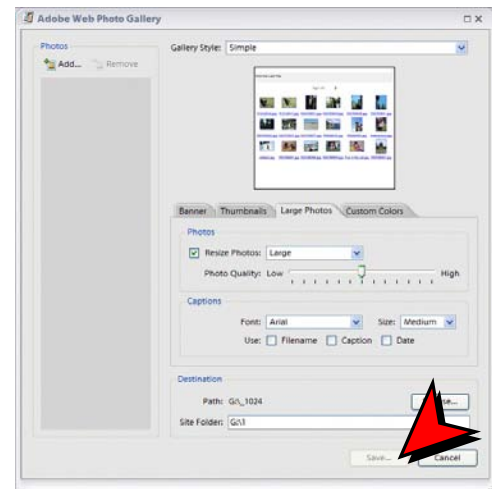


Figure 8