

AVOID THE ELEMENTS 7 WELCOME SCREEN



© Darry D Eggleston, 813.677.2871, DarryD@darryd.com

Click on any blue, underlined text to go to its linked reference.

The PSE 7 Welcome Screen no longer provides a start-up option for bypassing it and going directly to the Editor or the Organizer.

Also the advertising for Photoshop.com on the Welcome Screen and the constant flashing tips in the lower-right corner of the Organizer and Editor do not make using Elements 7 a better experience.

1-0. CREATE DESKTOP SHORTCUTS

1-1. Create a shortcut directly to the **Editor** (Figure 1).

- A. Use Windows Explorer to navigate to 'C:\Program Files\Adobe\Photoshop Elements 7.0'.
- B. RIGHT-click on '*PhotoshopelementsEditor.exe*'.
- C. Left-click on Send to ► Desktop (Create shortcut).

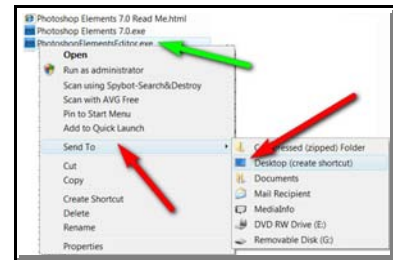


Figure 1

1-2. Create a shortcut directly to the **Organizer**.

- A. Use Windows Explorer to navigate to 'C:\Program Files\Adobe\Photoshop Elements 7.0'.
- B. RIGHT-click on '*PhotoshopelementsOrganizer.exe*'.
- C. Left-click on Send to ► Desktop (Create shortcut).

¹ Editors: Peggy S. Eggleston, Dick Evans & Parker Monroe. Permission for reproduction in whole or in part is granted to individuals and to organizations for internal, non-profit use provided credit is given to the author along with the copyright notice: Article reprinted with permission. Copyright © 2008 Darry D Eggleston, <http://DarryD.com>.

2-0. CREATE START MENU SHORTCUTS

2-1. Create a shortcut directly to the **Editor** (Figure 2).

- A. Use Windows Explorer to navigate to 'C:\Program Files\Adobe\Photoshop Elements 7.0'.
- B. RIGHT-click on '*PhotoshopelementsEditor.exe*'.
- C. Left-click on Pin To Start Menu.

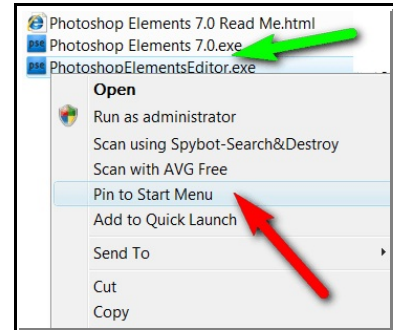


Figure 2

2-2. Create a shortcut directly to the **Organizer**.

- A. Use Windows Explorer to navigate to 'C:\Program Files\Adobe\Photoshop Elements 7.0'.
- B. RIGHT-click on '*PhotoshopelementsOrganizer.exe*'.
- C. Left-click on Pin To Start Menu.