

Outlook Express 6

FIX SPELL CHECKING

© Darry D Eggleston, 813.677.2871, DarryD@darryd.com



On some PC's, using Windows XP, spell checking does not work and cannot be enabled in Outlook Express 6. When you try to spell-check a message, you may receive the message "An error occurred while the spelling was being checked" or there is no obvious method to check spelling.

That is because Outlook Express does not have a spell checker. It can make use of the spell checker in Microsoft Office 95 or later, or Microsoft Works (later versions, which include Microsoft Word) if present. However, a system file that is required in order to make use of the spell checker is not installed by Windows XP.

SOLUTION

Obtain a copy of the missing file *csapi3t1.dll* and place it in the folder "C:\Program Files\Common Files\Microsoft Shared\Proof".

OPTION 1

Download a copy of the file by clicking [HERE](#):

1. Save the file to your Desktop.
2. Close Outlook Express.
3. Double, left-click on the shortcut for the file.
4. Open Outlook Express.
5. From the MenuBar, select Tools > Options.
6. Click on the "Spelling" tab.
7. Verify that "Always check spelling" is enabled (**Figure 1**).
8. Create an email, to yourself, with words spelled incorrectly.
9. Click on "Send" button. Spell-check should begin.
10. If that doesn't work, select Option 2 below.

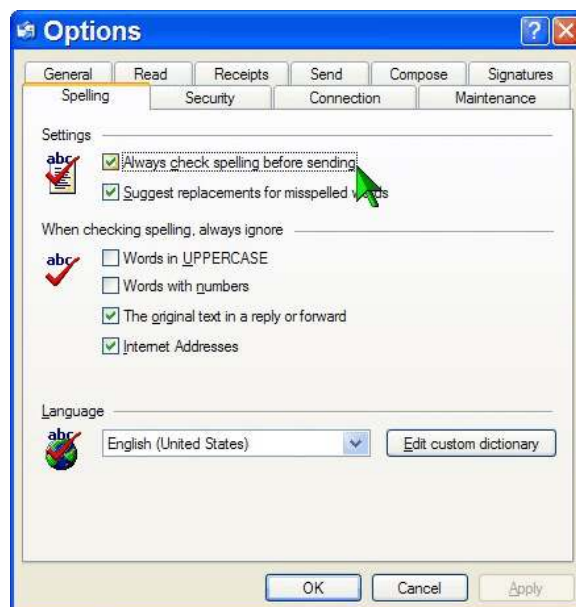


Figure 1

OPTION 2

1. Click Start > Run.
2. Type "*msConfig*" (without the quote marks) and touch Enter key, on the keyboard.
3. When the System Configuration Utility starts, click the button captioned "Expand File".
4. In the "Expand One File from Installation Source" dialog box, type "*csapi3t1.dll*" (without the quote marks).
5. Select the location to restore from (this will either be your Windows XP CD or a folder named *i386* on your hard disk).

If you can't find an *i386* folder, you might have a copy of *csapi3t1.dll* somewhere on your Microsoft Office CD. Copies may also be extracted from the file *mailnews.cab* in an Internet Explorer 5.0 or 5.5 distribution set, the file *win98_27.cab* on a Windows 98 CD, or the file *Win_10.cab* on a Windows Me CD.

6. Type the name of the folder where the restored file should go:
C:\Program Files\Common Files\Microsoft Shared\Proof
7. Click Expand.
8. Restart Windows.
9. Open Outlook Express.
10. From the MenuBar, select Tools > Options.
11. Click on the "Spelling" tab.
12. Verify that "Always check spelling" is enabled.