

Outlook Express IMAGE RESIZING

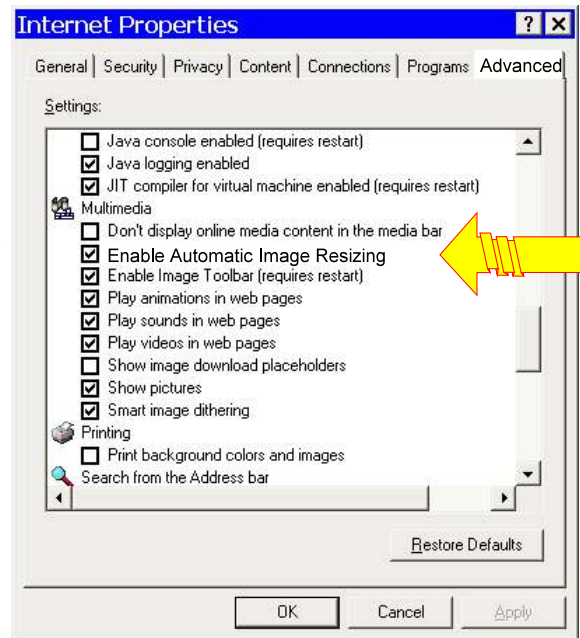
© Darry D Eggleston, 813.677.2871, DarryD@darryd.com



Sometimes, you want to insert a graphic image that is too large for the email message.

Microsoft Internet Explorer 6 resizes large images on-the-fly so they will fit in the browser Window. Some people like this feature; others hate it. To turn Automatic Image Resizing on:

- ❶ From the Desktop:
 - In Windows 95/98/Me, select *Start > Settings > Control Panel*.
 - In Windows XP, select *Start > Control Panel*
- ❷ Double-click on *Internet Options*.
- ❸ Click on the *Advanced* tab/
- ❹ Scroll down to the *Multimedia* section.
- ❺ Put a check in the box next to *Enable Automatic Image Resizing* turns the option on, removing the check turns it off.
- ❻ Click *OK* button.



Figur 1